

## **SERVICE REQUIREMENTS**

**⚠ WARNING!** *Read and understand the contents of this manual before attempting to service the ECOSTREAM ELITE Water Treatment System. Failure to follow the instructions in this manual could result in death, serious personal injury, or severe property damage. Only trained and qualified technicians should attempt to install, maintain, or service Waterlogic Equipment.*

1. Visually inspect all electrical and water connections for signs of wear or damage.

**⚠ DANGER!** ***HIGH VOLTAGE ELECTRICAL HAZARD.** Unplug before inspection and service.*

2. **Waterlogic** recommends changing the UV Lamp every 12 months.

**⚠ WARNING!** ***ULTRAVIOLET RADIATION.** Protect your skin and eyes against ultraviolet rays. Never look directly at an operating UV light. Disconnect before removing UV Lamp.*

**⚠ CAUTION!** ***UV LAMPS ARE HAZARDOUS.** Lamps are considered Hazardous Waste and must be disposed of accordingly. Refer to Product MSDS sheet for details.*

3. Clean the quartz sleeve that surrounds the UV lamp with a non-abrasive cloth, descaling solution, or ultrasonic bath if needed when changing UV lamps.

**⚠ CAUTION!** ***UV SYSTEM IS FRAGILE.** Never handle the UV lamp or Quartz Sleeve with bare hands. UV Lamp and quartz sleeve must be free of oils and contaminants to ensure proper operation. Use a soft non-abrasive cloth to clean.*

3. Inspect the Quartz Sleeve O-ring for wear or damage and replace as necessary.
4. Ensure there is adequate (minimum of 2") clearance around the **ECOSTREAM ELITE Water Treatment System** and clean the condenser grill and compressor fan to provide efficient cooling system operation.
5. Sanitize the cold tank per instructions in the pre-installation procedures.

**⚠ WARNING!** ***SANITIZER MAY CONTAIN HAZARDOUS CHEMICALS.** Use of proper personal protective equipment such as rubber gloves and eye protection is required.*

6. Clean and sanitize external surfaces of the **ECOSTREAM ELITE Water Treatment System**. Use soap and water or chemicals that are compatible with ABS plastic and will not damage or degrade the product surfaces.
7. Remove and clean the Faucet. Replace as needed.
8. Descale Hot Tank Annually, or as needed.

## LG COMPRESSOR

\*Parts List in this manual updated to reflect these changes.

**LG Compressor 120V R134A 1/8HP CSB035LJCM with external start/run capacitor.**

### LG Compressor with External Start/Run Capacitor



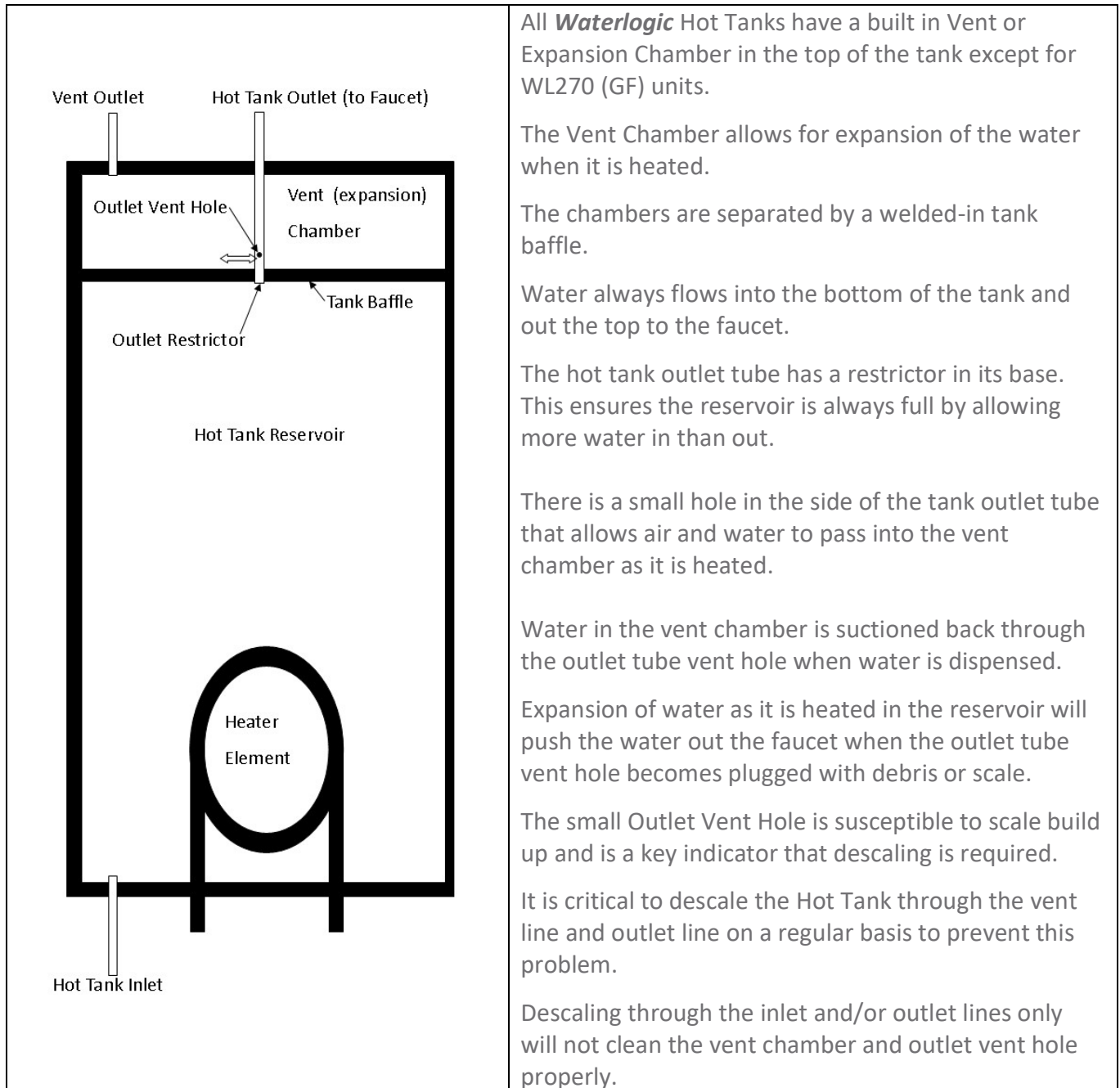
LG CSB035 LJCM Compressor

**External Capacitor**





### **LG CSB035LJCM 120V R134A 1/8HP Compressor Repair Parts**

Part # CO-0017-L00-00	LG Compressor 120V CSB035LJCM-PTC Relay
Part # CO-0018-L00-00	LG Compressor 120V CSB035LJCM-Overload Protector
Part # CO-0019-L00-00	LG Compressor 120V CSB035LJCM-Capacitor

## HOT TANK PRINCIPLES OF OPERATION



## RESETTING THE HOT TANK OVERLOAD OR HIGH LIMIT SAFETY

1.	<p>Red Heater and Compressor Switch must be in the OFF position</p> <p><i>O=OFF</i></p>	
2.	<p>Unplug the Power Cord from rear of <b>ECOSTREAM ELITE Water Treatment System</b>.</p>	
3.	<p>Tower Model: Remove the <u>Lower Front Panel</u> by removing the Phillips Head Screws underneath the Lower Front Panel.</p> <p>Counter Top Model: Remove the <u>Side Panel</u> by removing Phillips Head Screws from Side Panel.</p>	
4.	<p>Locate the overload safety on the rear of the Hot Tank.</p> <p>As you look through the condenser coils on the rear of the unit, you will see the Hot Tank located on the right-hand side.</p>	
5.	<p>Press the reset button (tank has been removed for demonstration purposes).</p> <div style="display: flex; justify-content: space-around;">   </div> <div style="border: 1px solid black; padding: 2px; width: fit-content; margin: 10px auto;">Hot Tank Reset</div>	
6.	<p>Replace Panel on unit using Phillips head screws.</p>	

7.	Plug in the Power Cord.
8.	Make sure the Hot and Cold Tanks are filled with water BEFORE turning on the Red Heater and Compressor Switch.  Verify the cooler is fully operational before installing it at the customers' site.

## **HOT TANK DESCALING INSTRUCTIONS**

The Hot Tank requires removal of mineral deposits (descaling) on a regular basis. Typically descaling should take place every 6 to 12 months to preserve the long-term health of your unit.

Use non-toxic cleaner such as ScaleKleen, DEZCAL, 20% Citric Acid Solution, or Undiluted Vinegar Solution to remove mineral deposits as directed by the manufacturer depending upon filtration and local water conditions.

Descaling is an important process that removes calcium deposits, or scale, that can build up inside a tank over time. Calcium and scale is non-toxic but left unattended will hinder your **ECOSTREAM ELITE Water Treatment System's** performance.

**⚠️ WARNING!** **PERSONAL PROTECTIVE EQUIPMENT REQUIRED.** *Always ensure proper ventilation and use rubber or nitrile gloves and eye protection when using chemicals. Refer to Material Safety Data Sheet for specific requirements of each product.*

**⚠️ CAUTION!** **STAINLESS STEEL TANK DESCALING.**  
*The Hot Tank is made from stainless steel. Ensure descaling solution is compatible with stainless and always flush the **ECOSTREAM ELITE Water Treatment System** completely. Dispose in an environmentally safe manner.*

### **Materials Needed:**

- Personal Protective Equipment. Rubber or Nitrile Safety Gloves and Protective Eyewear
  - Phillips Screwdriver
  - Temperature Gauge
  - Water Pitcher or Container to collect water from the faucet
  - 5-gallon container or drain basin
  - Citric Acid Based Cleaner
  - ¼" Plastic Tubing, at least 4 feet in length, and assorted ¼" quick connect fittings
  - Sanitizing Cartridge
  - Food Coloring
1. Put descaler per directions and 3 drops of food coloring into the descaling cartridge.
  2. Connect descaling cartridge to the inlet water supply and connect to inlet bulkhead fitting on the back of the **ECOSTREAM ELITE Water Treatment System**. Turn on Water Supply.
  3. Select Hot Water and depress the Main Dispensing Button on the Front Control Panel until descaling solution (colored water) comes out of the faucet. Container and drain basic will be required to catch water from the faucet.

4. Turn off water supply and remove sanitizing cartridge from inlet water supply. Reconnect water supply to inlet fitting.
5. Allow descaling solution to remain in the Hot Tank for 15 minutes (length of time may vary depending on water conditions).
6. Place a pitcher, catch basin or other container under the faucet of the **ECOSTREAM ELITE Water Treatment System**.
7. Flush the Hot Tank until water runs clear.
8. Once clear Water dispenses from the faucet the Hot Tank has been descaled. Always ensure the **ECOSTREAM ELITE Water Treatment System** is performing to the customer's satisfaction.

**⚠ WARNING! HOT WATER HAZARD.** The **ECOSTREAM ELITE Water Treatment System** Produces Hot Water and Steam. Always use insulated and chemically compatible containers and let **ECOSTREAM ELITE Water Treatment System** cool down before draining the hot tank to avoid injury.

**⚠ CAUTION! MUST REPLACE HOT TANK EVERY 3-5 YEARS DEPENDING ON USAGE**  
The Hot Tank and its controls must be replaced a minimum of every three to five years depending on usage to ensure efficient and dependable operation.

**⚠ WARNING! REINSTALL ALL PANELS AND COVERS.** Always reinstall all Panels, protective covers, and fasteners after servicing equipment. Failure to do so could result in severe personal injury and will void the certifications and warranty of the equipment.

## **REPLACEMENT COMPONENTS (CONSUMABLES)**

Component	WLCP Part No.	Frequency of Replacement
UV Light, 15 Watt UV Lamp <b>Tower &amp; Counter Top</b>	CT-2085- IA0-00	Every 12 months, or as required
Hot Tank 1.5 Liter (0.39 Gallons) 87°C (189°F) – <b>Tower &amp; Counter Top</b>	HT-3024	Replace every 3-5 years depending on usage
GAC Filter - 10" Carbon Activated Inline Filter – <i>Optional</i> <i>*Filter Element PN FT-0038-WLT</i>	FT-0035	Every 6-months or as required. Local water conditions will determine proper filter type and maintenance schedule. FT-0035-IL-WLT
Carbon Block - 10" CBC 1 Micron Lead and Cyst Reduction Inline Filter – <i>Optional</i> <i>*Filter Element PN FT-0064-WLT</i>	FT-0063	Every 6-months or as required. Local water conditions will determine proper filter type and maintenance schedule. FT-0063-IL-WLT
Sediment Filter - 10" Sediment 20 Micron Inline Filter – <i>Optional</i> <i>*Filter Element PN FT-0055-WLT</i>	FT-0053	Every 6-months or as required. Local water conditions will determine proper filter type and maintenance schedule. FT-0053-IL-WLT

**⚠ CAUTION!** Use only Waterlogic Replacement parts that can be obtained from *Waterlogic* or an *Authorized Waterlogic Dealer*, failure to do so will void the Warranty.

See Installation and Service Manual for additional information.

### Hot Tank Service

Hot Tanks (with controls) must be replaced at least every 3-5 years depending on usage. Descaling hot tank may be required on a regular basis depending upon filtration and local water conditions. See Installation and Service Manual for further details.

### Surface Cleaning

Clean on a regular basis with damp lint free cloth. Never use harsh chemicals (alcohol or acid based) or abrasive agents on any part of the product to avoid damage. A mild cleaner such as Simple Green or equivalent is recommended.

## **DISPOSAL**

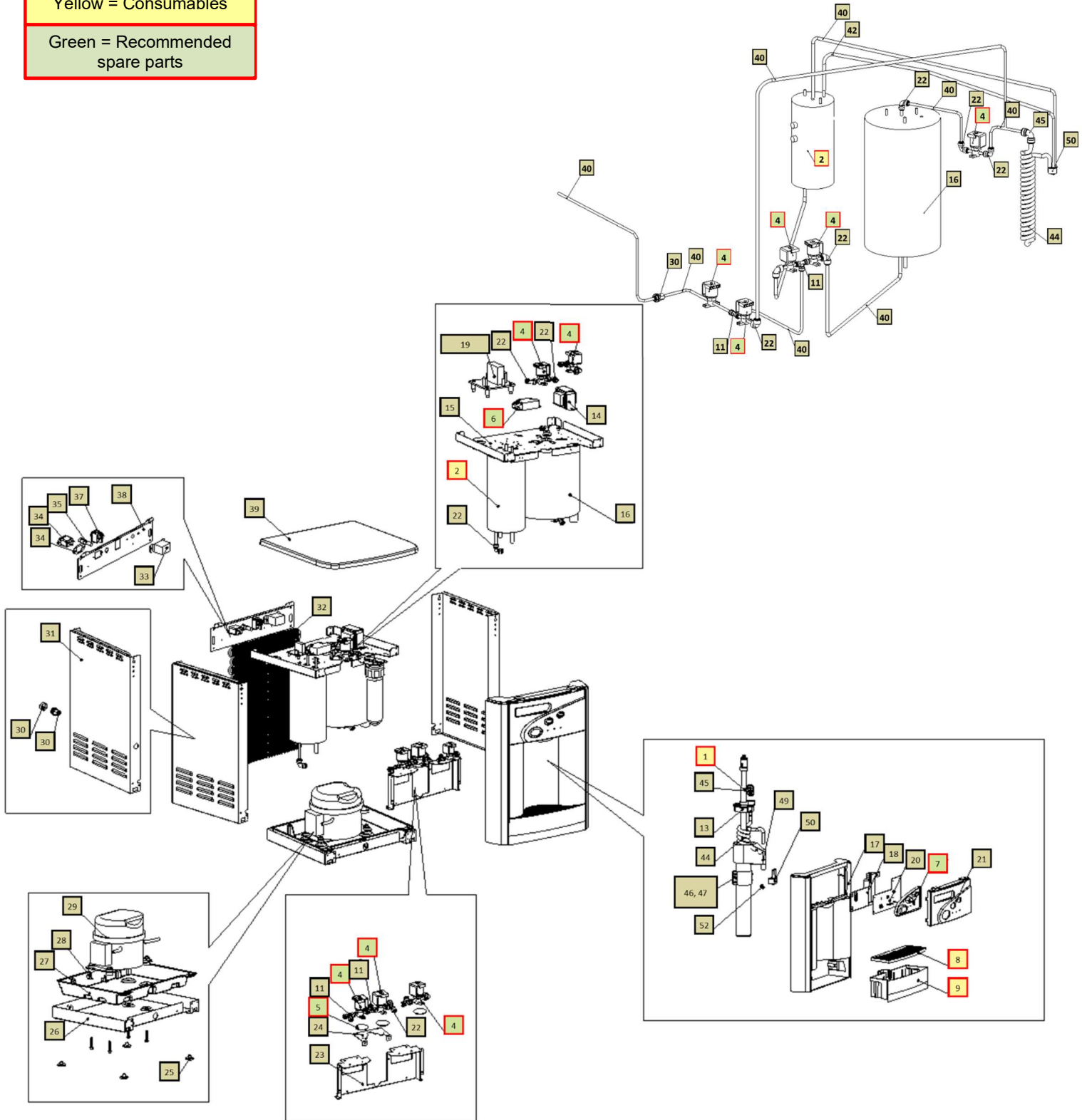
### End of Life

At the **end of this product's life**, ensure that it is disposed of in an environmentally friendly manner which is fully compliant **with all Federal/State/Local Requirements and Guidelines**. Do not dispose of this appliance with normal household or business waste.

## ECOSTREAM ELITE COUNTER TOP DRAWING AND PARTS LIST

Wetted Drawing

Yellow = Consumables  
Green = Recommended spare parts



No	WLCP Part No.	Description	Part No	Stocked?	
<b>Consumables</b>					
1	12-8310	15W LTFWXTM UV Lamp - 80	CT-2085-IA0-00	Yes	
2	10-4029	Hot Tank 1.5 Liter UVF2 – Counter Top	HT-3024	Yes	
<b>Recommended Spare Parts</b>					
3.1	12-1360	Overload with Manual Reset - 105°C (221°F) <i>Recommend stocking 2 each per every 10 units purchased</i>	HT-3012	Yes	
3.2	10-3030	Hot Water Temp Sensor	HT-3002	Yes	
4		MS DC Solenoid Valve SWV240-01	PU-0017-L00-00	Yes	
5	CU-0001	Solenoid Cushion <i>Recommend stocking 2 each per every 10 units purchased</i>	CU-0001	Yes	
6		13W/15W 120V/60Hz Electronic FX Ballast	EN-0008-LA1-00	Yes	
7	12-5220	Silicon Button Key Mat AFL HCA-Culligan Type	PL-1206-A	Yes	
8	12-5230	WL2200 Silver Drip Tray Grill Culligan	PL-1152-A	Yes	
9		Canteen WL2200FX Drip Tray Body – WL & BIO Logo	PL-0274-L00-SI	Yes	

Not Shown	01-2076	ScaleKleen <i>Recommend stocking 2 each per every 10 units purchased</i>	NA	Yes	
<b>Remaining Parts</b>					
10	Purchase from John Guest	JG Reducing Elbow Connector 5/16" * 1/4" (PI211008S)	PU-4007	No	
11	Purchase from John Guest	JG Equal Tee Connector 1/4" (P10208S)	PU-4011	No	
12	10-3017	PCB Stand-off Pin	EN-6059	Yes	
13	12-8320	WL2000 Firewall UV Lamp Fixing Rubber	CT-2088	Yes	
14		Power Transformer 120V for Firewall	EL-5147	Yes	
15	12-3165	WL2000 Mini Upper Base	ST-8150	Yes	
16		2L UV Cold Tank Assembly	CT-2060-B	Yes	
17	12-8345	WL2000 Front Panel w/ Drip Tray Insert - Firewall	PL-1146-A	Yes	
17.1	12-0001	Hot Water Caution Label – <i>adhere to Front Upper Drip Tray Insert Panel.</i>	LP-7169	Yes	
18	12-5285	AFL PCB Cover	PL-1303	Yes	

19		WL2200 Main PCB HCA & CA (Culligan US Executive) w/ Leak Detection	EN-6102-A	Yes	
20		Canteen WL2200 Display PCB	EN-0109-L00-00	Yes	
21	12-8051	Canteen WL2200FX Front Upper Insert Panel	PL-0273-L00-SI	Yes	
22	Purchase from John Guest	JG Equal Elbow Connector 1/4" (PI0308S)	PU-4008	No	
23	12-3175	Filter Bracket	ST-8152-A	Yes	
24		WL2000 Mini Firewall Solenoid Valve Fixing Bracket	ST-8297	Yes	
25	12-3150	Unit Rubber Feet WL2000 Mini	PL-1251-CN	Yes	
26	12-3170	Bottom Tray (Down Base)	ST-8151	Yes	
27	12-3155	Chiller 3 Mini Leak Tray	PL-1294-A	Yes	
28	12-3180	Leak Containment Tray Clip (sensor 0.5mm)	ST-8207-CN	Yes	
28.1	NA	Leak Sensor Wire	EL-5076-KR	No	
29.1		LG Compressor 120V R134A CSB035LJCM	CO-0020-L00-00	Yes	

29.2		Compressor Capacitor	CO-0019-L00-00	Yes	
29.3		Capacitor Bracket	ST-0216-L00-00	Yes	
29.4		PTC Relay	CO-0017-L00-00	Yes	
29.5		Overload Protector	CO-0018-L00-00	Yes	
29.6	12-1001	Filter Dryer	CO-9008	Yes	
30	10-3067	Bulkhead Union ¼" x ¼" John Guest P/N PI1208S	PU-4028	Yes	
31	12-5290	WL2000 Mini Side Panel - Silver	ST-8148	Yes	
32	12-3100	Wire Condenser – WL2000 Mini	CO-9031	Special Order	
33		Cold Tank Thermostat	CT-2070-A	Yes	
33.1		Cold Thermostat Cover Label	LP-0326-L00-00	Yes	
34		Socket for Plug Connection V0 Class	EL-0061-L00-00	Yes	
35	10-3014	Fuse Holder and Fuse 120V / 15A with One Wire	EL-5053	Yes	
35.1	10-3013	Fuse 120V / 15A	EL-5010	Yes	

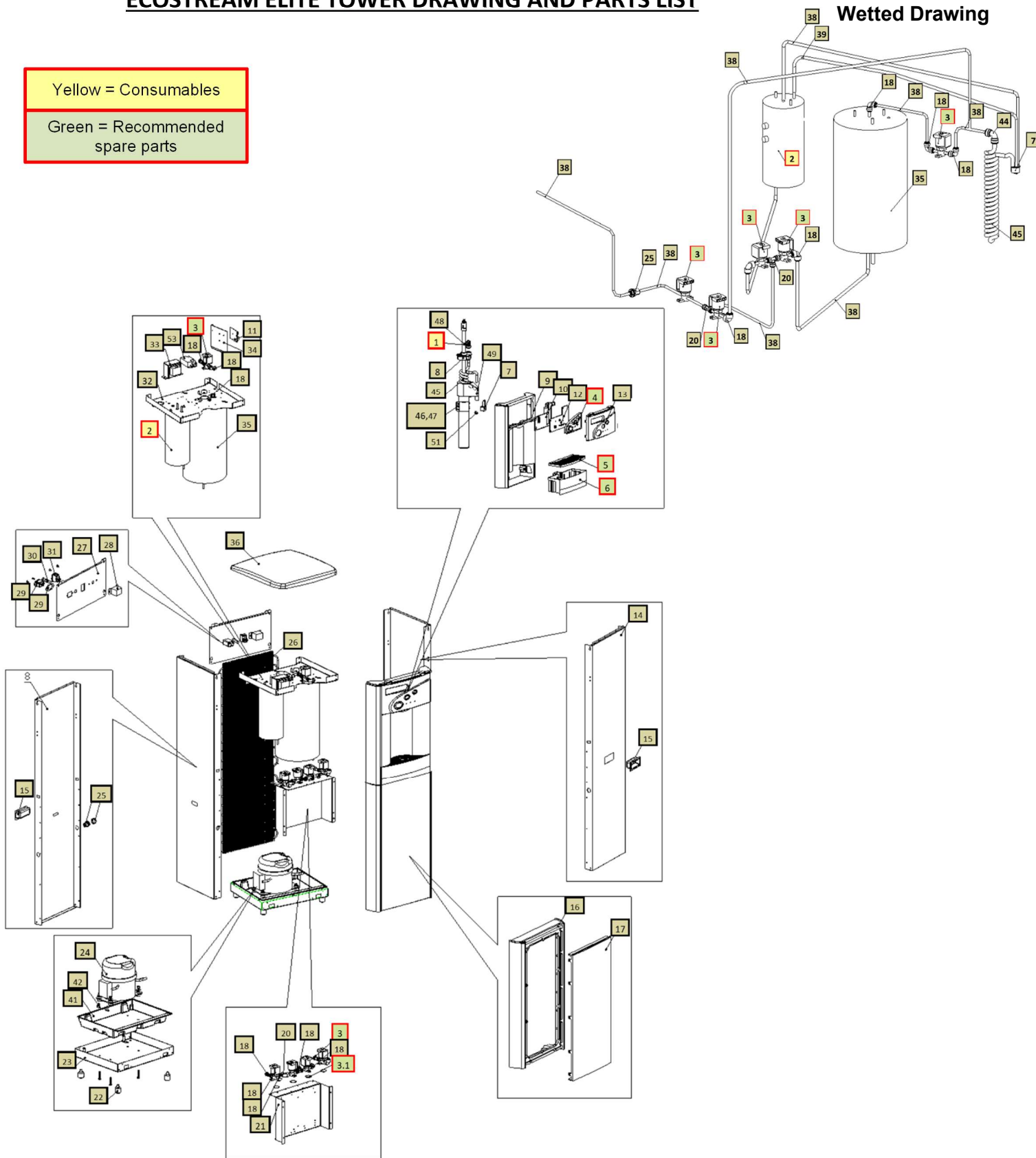
37	12-5600	Power Switch (Red)	EL-5019-A	Yes	
38	12-5674	WL220 Mini Back Panel - Silver	ST-8253	Yes	
39	12-5265	BOA Top Cover Silver (WL2200)	PL-1249-C	Yes	
40	Purchase from John Guest	JG LLD PE Tube - Blue O.D.1/4"John Guest P/N PE-08-BI-1000F-B	PU-4031	No	
41	Purchase from John Guest	JG 1/4" Plug PI0808S (used with Bulkhead Union 1/4" x 1/4" John Guest P/N PI1208S)	PL-4140	No	
42	10-7040	Silicon Tube 5/16" for Hot Water	PU-4064	Yes	
43	10-3062	JG LLDPE Tube - Blue 8mm John Guest P/N PE-0806-100M-B	PU-4014	Yes	
44	12-8305	Faucet UV – Spiral Quartz	FU-0007	Yes	
Not Shown	10-3007	Power Cord 120V – 1840 mm	EL-5001-B	Yes	
45	Purchase from John Guest	JG 3/8"x1/4" Reducing Fitting (PI211208S)	PU-4137	Yes	
46	12-8380	UVC Sensor Fixing Metal Bracket Front (with tube)	FU-0010	Yes	

47	12-8385	UVC Sensor Fixing Metal Bracket Back	FU-0011	Yes	
48		Sensor Fixing Rubber	PL-1358	Yes	
49		WL2 Firewall Mark IV AL Assy India	FW-0027-I00-00	Yes	
50	12-8370	WL2000 Firewall Hot Water Faucet	PL-1351	Yes	
51		Firewall Buffer	FW-0020-L00	Yes	
52		UVC Sensor Wire – 2FW	EL-5146	Yes	
53		JG Stem Elbow Connector ¼"	PU-4066	Yes	

## ECOSTREAM ELITE TOWER DRAWING AND PARTS LIST

Wetted Drawing

Yellow = Consumables  
Green = Recommended spare parts



No	WLCP Part No.	Description	Part No	Cold Only	Hot & Cold	Stocked?	
<b>Consumables</b>							
1	12-8310	15W LTFW XTM UV Lamp - 80	CT-2085-IA0-00	X	X	Yes	
2	10-4029	Hot Tank (Pipe) 120V/500W – UVF2 1.5L	HT-3024		X	Yes	
<b>Recommended Spare Parts</b>							
2.1	12-1360	Overload with Manual Reset - 105°C (221°F) <i>Recommend stocking 2 each per every 10 units purchased</i>	HT-3012		X	Yes	
2.2	10-3030	Hot Water Temp Sensor	HT-3002			Yes	
3		MS DC Solenoid Valve SWV24-01	PU-0017-L00-00	X	X	Yes	
3.1	CU-0001	Solenoid Cushion <i>Recommend stocking 2 each per every 10 units purchased</i>	CU-0001	X	X	Yes	
4	12-5220	Silicon Button Key Mat AFL HCA – Culligan Type	PL-1206-A		X	Yes	
5	12-5230	Drip Tray Grill <i>Recommend stocking 4 each per every 10 units ordered</i>	PL-1152-A	X	X	Yes	
6		Canteen WL2200FX Drip Tray Body WL Logo	PL-0274-L00-SI	X	X	Yes	

Not Shown	01-2076	ScaleKleen <i>Recommend stocking 5 each per every 10 units ordered</i>	NA	X	X	Yes	
<b>Remaining Parts</b>							
7	12-8370	WL2000 Firewall Hot Water Faucet	PL-1351		X	Yes	
8	12-8320	WL200 Firewall UV Lamp Fixing Rubber	CT-2088			Yes	
9.1		Front Panel for Drip Tray Insert <i>when purchasing, also request Hot Water Caution Label LP-7169 / 12-0001 to adhere to front of this panel.</i>	PL-1146-A	X	X	Yes	
9.2	12-0001	Hot Water Caution Label Adhere to Front Panel for Drip Tray Insert	LP-7169		X	Yes	
10	12-5285	AFL PCB Cover	PL-1303	X	X	Yes	
11	12-5315	WL2200 Main PCB HCA w/ Leak Detection	EN-6102-A		X	Yes	
12		WL2000 Display PCB (Canteen)	EN-0109-L00-00	X		Yes	
13		Canteen WL2200FX Front Upper Inset Panel	PL-0273-L00-SI	X	X	Yes	
14	12-5200	WL2000 FS Silver Side Panel with Hole for Handle	ST-8249	X	X	Yes	
15	19-1030	Side Panel Plastic Handle	PL-1123	X	X	Yes	

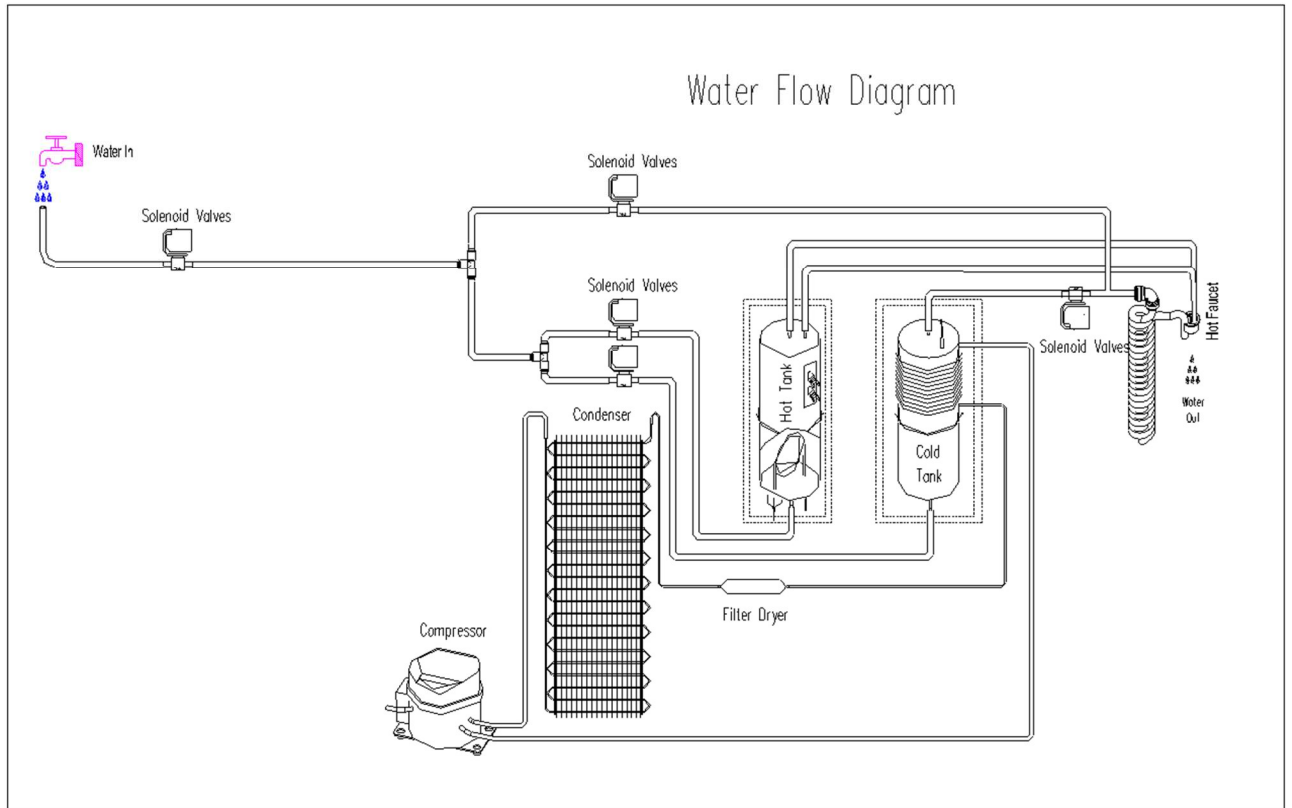
16		Front Lower Silver Panel	PL-1148	X	X	Yes	
17		Front Lower Insert Panel-Silver	PL-1188-A	X	X	Yes	
18	Purchase from John Guest	JG Equal Elbow Connector ¼"	PU-4008	X	X	No	
19	Purchase from John Guest	JG Reducing Elbow Connector 5/16" * ¼"	PU-4007	X	X	No	
20	Purchase from John Guest	JG Equal Tee Connector ¼"	PU-4011	X	X	No	
21	12-8003	Filter Bracket	ST-8138	X	X	Yes	
22		Unit Control Rubber Feet	ST-8167-CN	X	X	Yes	
23	12-8004	WL2000 Down Base	ST-8137	X	X	Yes	
24.1	CO-0020-L00-00	LG Compressor 120V R134A CSB035LJCM	CO-0020-L00-00	X	X	Yes	
24.2		Compressor Capacitor	CO-0019-L00-00	X	X	Yes	
24.3		Capacitor Bracket	ST-0216-L00-00	X	X	Yes	
24.4		PTC Relay	CO-0017-L00-00	X	X	Yes	

24.5		Overload Protector	CO-0018-L00-00	X	X	Yes	
29.6	12-1001	Filter Dryer	CO-9008	X	X	Yes	
25	10-3067	Bulkhead Union ¼" x ¼" John Guest P/N PI1208S	PU-4028	X	X	Yes	
26	12-8102	Wire Condenser	CO-9027	X	X	Special Order	
27	12-8002	Back Panel Silver	ST-8135	X	X	No	
28		Cold Tank Thermostat	CT-2070-A	X	X	Yes	
28.1	LP-0326	Cold Thermostat Cover Label	PL-0326-L00-00	X	X	Yes	
29	EL-0061-L00-00	Socket for Plug Connection V0 Class	EL-0061-L00-00	X	X	Yes	
30	10-3014	Fuse Holder and Fuse 120V / 15A with One Wire	EL-5053	X	X	Yes	
30.1	10-3013	Fuse 120V / 15A	EL-5010	X	X	Yes	
31	12-5600	Power Switch (Red) – No Backlights	EL-5019-A	X	X	Yes	
32		Upper Shelf	ST-8136-R2	X	X	Yes	
33		Power Transformer 120V	EL-5147	X	X	Yes	

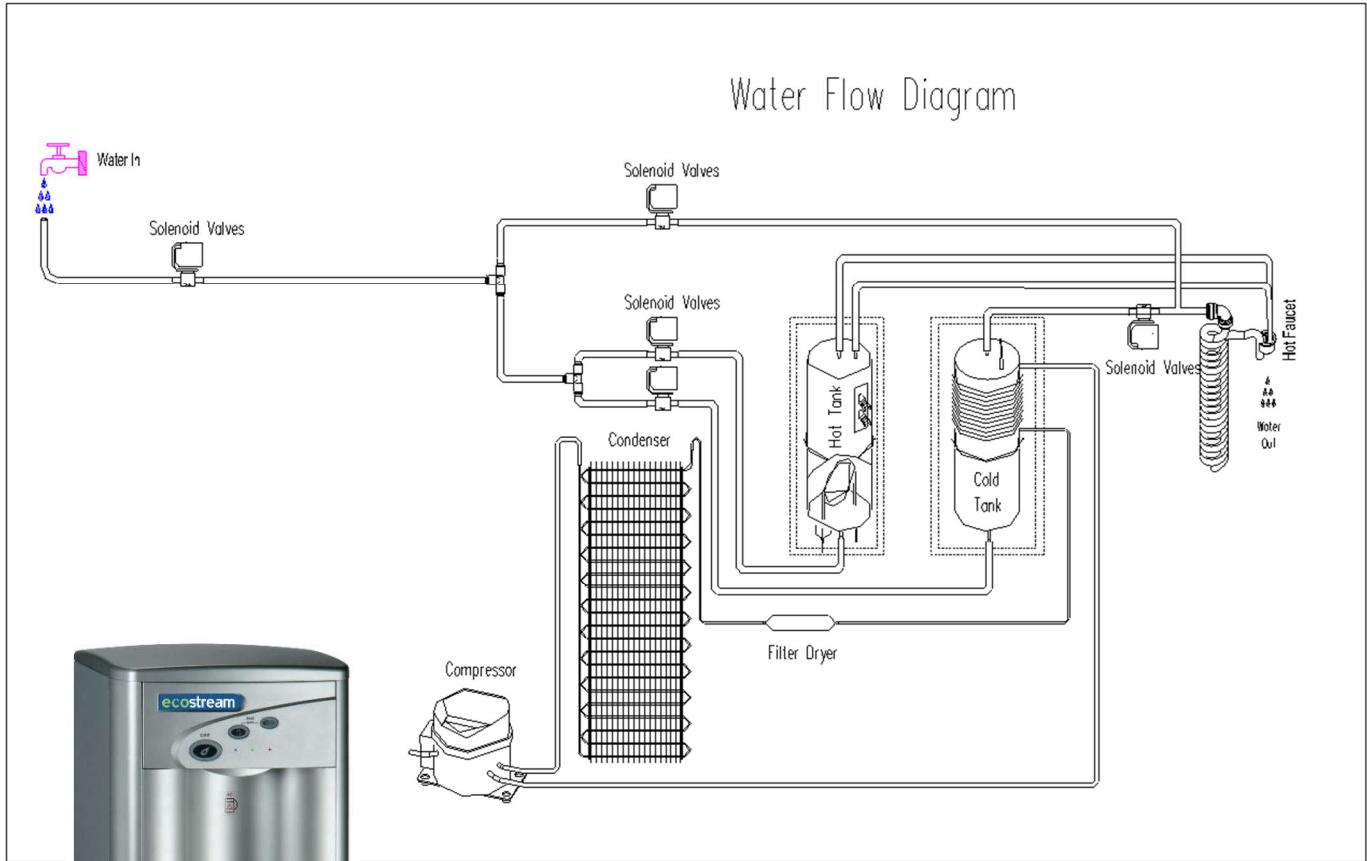
34		Main PCB Bracket	ST-8165-CN	X	X	Yes	
34.1	10-3017	PCB Stand-off Pin	EN-6059	X	X	Yes	
35	CT-2017-A	Cold Tank 4 Liter Assembly	CT-2017-A	X	X	No	
36	12-5260	Top Cover – Silver	PL-1199-C	X	X	Yes	
37	10-3062	JG LLDPE Tube - Blue 8mm John Guest P/N PE-0806-100M-B	PU-4014	X	X	Yes	
38	19-1054	JG LLD PE Tube - Blue O.D.1/4" John Guest P/N PE-08-BI-1000F-B	PU-4031	X	X	Purchase from John Guest	
39		Silicon Tube 5/16" for Hot Water	PL-4064-L00-00		X	Yes	
Not Shown	10-3007	Power Cord 120V – 1840 mm	EL-5001-B	X	X	Yes	
40	Purchase from John Guest	JG 1/4" Plug PI0808S (used with Bulkhead Union 1/4" x 1/4" John Guest P/N PI1208S)	PL-1172	x	x	Yes	
41	12-3155	Chiller 3 Freestanding Leak Tray	PL-1294-A	x	x	Yes	
42		WL3000 Leak Containment tray Clip	ST-8207-CN	x	x	Yes	
43		Leak Sensor Wire	EL-5076-KR	x	x	Yes	
44	Purchase from John Guest	JG 3/8"x1/4" Reducing Fitting (PI211208S)	PU-4137	x	x	Yes	

45	12-8305	Faucet UV – Spiral Quartz	FU-0007	x	x	Yes	
46	12-8380	UVC Sensor Fixing Metal Bracket Front (with Tube)	FU-0010	x	x	Yes	
47	12-8385	UVC Sensor Fixing Metal Bracket Back	FU-0011	X	x	Yes	
48		Sensor Fixing Rubber	PL-1358	X	X	Yes	
49		WL2 Firewall Mark IV AL Assy from India	FW-0027-100-00	x	X	Yes	
50	FW-0020-L00	Firewall Buffer	FW-0020-L00	x	x	Yes	
51	12-8300	UVC Sensor Wire	AK-0063	x	x	Yes	
52		JG Straight Connector 1/4"	PU-4010	X	X	Yes	
53		13W/15W 120V/60Hz Electronic FX Ballast	EN-0008-LA1-00	X	X	Yes	

## ECOSTREAM ELITE COUNTER TOP WATER FLOW DIAGRAM



## ECOSTREAM ELITE TOWER WATER FLOW DIAGRAM



## ADJUSTING COLD SET POINT

Cold Water Temperature – Factory Set Point is 41°F (5°C) and can be adjusted to 34°F - 54°F (1.1°C to 12.2°C)

The cold set point can be adjusted by accessing the cold thermostat adjustment screw under the decal at the rear of the unit.



Remove the red portion of the Cold Tank Temperature label to access the adjustment screw.

The factory set point is ~41°F and is indicated by the dot on sheet metal.



Turning the adjustment screw clockwise to lower the set point temperature.

Do not adjust past the “Max Cold” position at 3:00 position to avoid freezing the cold tank.



Turning the adjustment screw counter-clockwise to raise the set point temperature.

## ECOSTREAM ELITE WATER TREATMENT SYSTEM ELECTRICAL DIAGRAM

**⚠ DANGER!** HIGH VOLTAGE ELECTRICAL HAZARD. PCB (Printed Circuit Board) contains High Voltage. Only trained and qualified technicians should attempt live testing.

