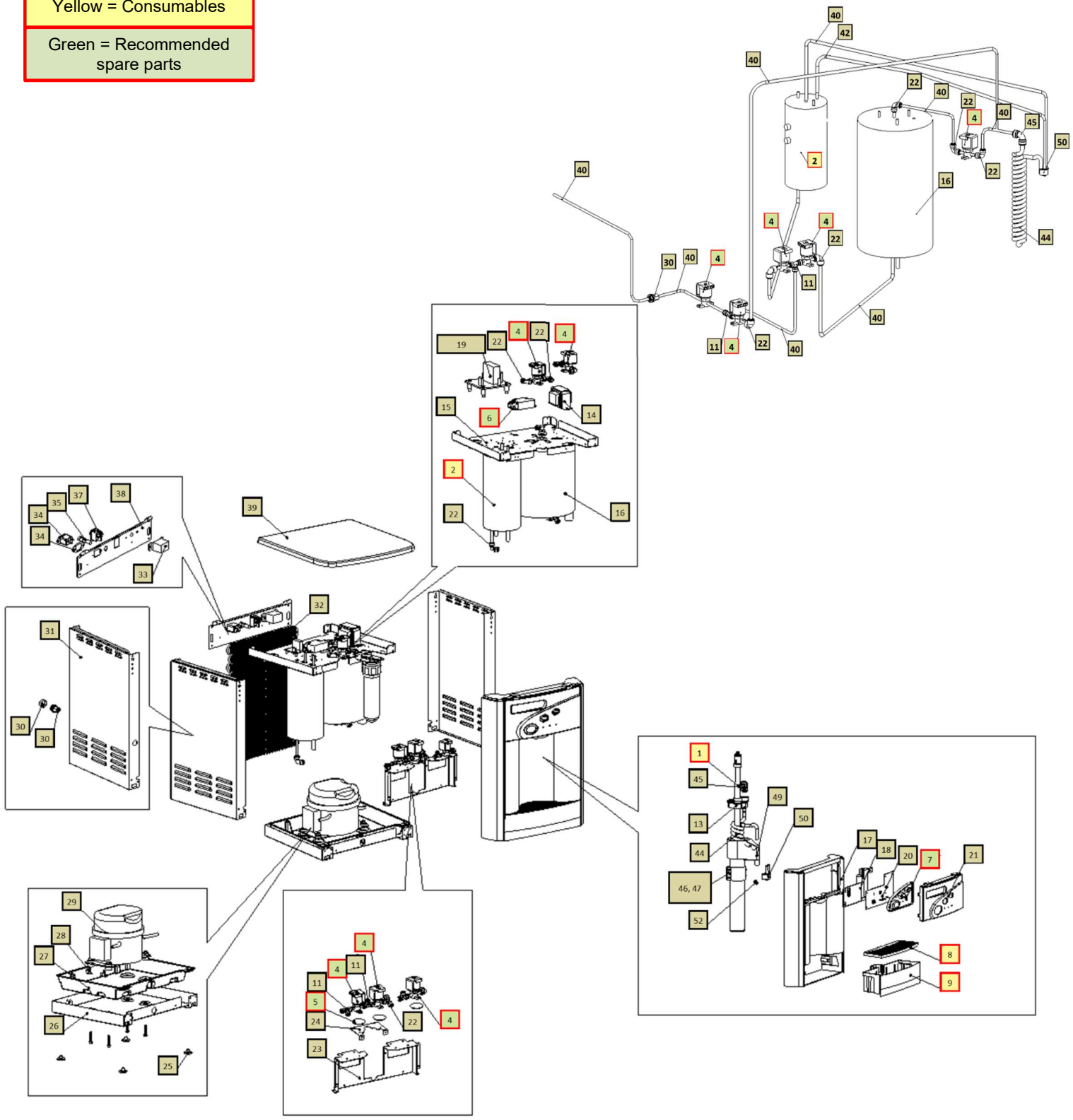


ECOSTREAM ELITE COUNTER TOP DRAWING AND PARTS LIST

Wetted Drawing

Yellow = Consumables
Green = Recommended spare parts



No	WLCP Part No.	Description	Part No	Stocked?	
Consumables					
1	12-8310	15W LTFWXTM UV Lamp - 80	CT-2085-IA0-00	Yes	
2	10-4029	Hot Tank 1.5 Liter UVF2 – Counter Top	HT-3024	Yes	
Recommended Spare Parts					
3.1	12-1360	Overload with Manual Reset - 105°C (221°F) <i>Recommend stocking 2 each per every 10 units purchased</i>	HT-3012	Yes	
3.2	10-3030	Hot Water Temp Sensor	HT-3002	Yes	
4		MS DC Solenoid Valve SWV240-01	PU-0017-L00-00	Yes	
5	CU-0001	Solenoid Cushion <i>Recommend stocking 2 each per every 10 units purchased</i>	CU-0001	Yes	
6		13W/15W 120V/60Hz Electronic FX Ballast	EN-0008-LA1-00	Yes	
7	12-5220	Silicon Button Key Mat AFL HCA-Culligan Type	PL-1206-A	Yes	
8	12-5230	WL2200 Silver Drip Tray Grill Culligan	PL-1152-A	Yes	
9		Canteen WL2200FX Drip Tray Body – WL & BIO Logo	PL-0274-L00-SI	Yes	

Not Shown	01-2076	ScaleKleen <i>Recommend stocking 2 each per every 10 units purchased</i>	NA	Yes	
Remaining Parts					
10	Purchase from John Guest	JG Reducing Elbow Connector 5/16" * 1/4" (PI211008S)	PU-4007	No	
11	Purchase from John Guest	JG Equal Tee Connector 1/4" (P10208S)	PU-4011	No	
12	10-3017	PCB Stand-off Pin	EN-6059	Yes	
13	12-8320	WL2000 Firewall UV Lamp Fixing Rubber	CT-2088	Yes	
14		Power Transformer 120V for Firewall	EL-5147	Yes	
15	12-3165	WL2000 Mini Upper Base	ST-8150	Yes	
16		2L UV Cold Tank Assembly	CT-2060-B	Yes	
17	12-8345	WL2000 Front Panel w/ Drip Tray Insert - Firewall	PL-1146-A	Yes	
17.1	12-0001	Hot Water Caution Label – <i>adhere to Front Upper Drip Tray Insert Panel.</i>	LP-7169	Yes	
18	12-5285	AFL PCB Cover	PL-1303	Yes	

19		WL2200 Main PCB HCA & CA (Culligan US Executive) w/ Leak Detection	EN-6102-A	Yes	
20		Canteen WL2200 Display PCB	EN-0109-L00-00	Yes	
21	12-8051	Canteen WL2200FX Front Upper Insert Panel	PL-0273-L00-SI	Yes	
22	Purchase from John Guest	JG Equal Elbow Connector 1/4" (PI0308S)	PU-4008	No	
23	12-3175	Filter Bracket	ST-8152-A	Yes	
24		WL2000 Mini Firewall Solenoid Valve Fixing Bracket	ST-8297	Yes	
25	12-3150	Unit Rubber Feet WL2000 Mini	PL-1251-CN	Yes	
26	12-3170	Bottom Tray (Down Base)	ST-8151	Yes	
27	12-3155	Chiller 3 Mini Leak Tray	PL-1294-A	Yes	
28	12-3180	Leak Containment Tray Clip (sensor 0.5mm)	ST-8207-CN	Yes	
28.1	NA	Leak Sensor Wire	EL-5076-KR	No	
29.1		LG Compressor 120V R134A CSB035LJCM	CO-0020-L00-00	Yes	

29.2		Compressor Capacitor	CO-0019-L00-00	Yes	
29.3		Capacitor Bracket	ST-0216-L00-00	Yes	
29.4		PTC Relay	CO-0017-L00-00	Yes	
29.5		Overload Protector	CO-0018-L00-00	Yes	
29.6	12-1001	Filter Dryer	CO-9008	Yes	
30	10-3067	Bulkhead Union ¼" x ¼" John Guest P/N PI1208S	PU-4028	Yes	
31	12-5290	WL2000 Mini Side Panel - Silver	ST-8148	Yes	
32	12-3100	Wire Condenser – WL2000 Mini	CO-9031	Special Order	
33		Cold Tank Thermostat	CT-2070-A	Yes	
33.1		Cold Thermostat Cover Label	LP-0326-L00-00	Yes	
34		Socket for Plug Connection V0 Class	EL-0061-L00-00	Yes	
35	10-3014	Fuse Holder and Fuse 120V / 15A with One Wire	EL-5053	Yes	
35.1	10-3013	Fuse 120V / 15A	EL-5010	Yes	

37	12-5600	Power Switch (Red)	EL-5019-A	Yes	
38	12-5674	WL220 Mini Back Panel - Silver	ST-8253	Yes	
39	12-5265	BOA Top Cover Silver (WL2200)	PL-1249-C	Yes	
40	Purchase from John Guest	JG LLD PE Tube - Blue O.D.1/4"John Guest P/N PE-08-BI-1000F-B	PU-4031	No	
41	Purchase from John Guest	JG 1/4" Plug PI0808S (used with Bulkhead Union 1/4" x 1/4" John Guest P/N PI1208S)	PL-4140	No	
42	10-7040	Silicon Tube 5/16" for Hot Water	PU-4064	Yes	
43	10-3062	JG LLDPE Tube - Blue 8mm John Guest P/N PE-0806-100M-B	PU-4014	Yes	
44	12-8305	Faucet UV – Spiral Quartz	FU-0007	Yes	
Not Shown	10-3007	Power Cord 120V – 1840 mm	EL-5001-B	Yes	
45	Purchase from John Guest	JG 3/8"x1/4" Reducing Fitting (PI211208S)	PU-4137	Yes	
46	12-8380	UVC Sensor Fixing Metal Bracket Front (with tube)	FU-0010	Yes	

47	12-8385	UVC Sensor Fixing Metal Bracket Back	FU-0011	Yes	
48		Sensor Fixing Rubber	PL-1358	Yes	
49		WL2 Firewall Mark IV AL Assy India	FW-0027-I00-00	Yes	
50	12-8370	WL2000 Firewall Hot Water Faucet	PL-1351	Yes	
51		Firewall Buffer	FW-0020-L00	Yes	
52		UVC Sensor Wire – 2FW	EL-5146	Yes	
53		JG Stem Elbow Connector ¼"	PU-4066	Yes	