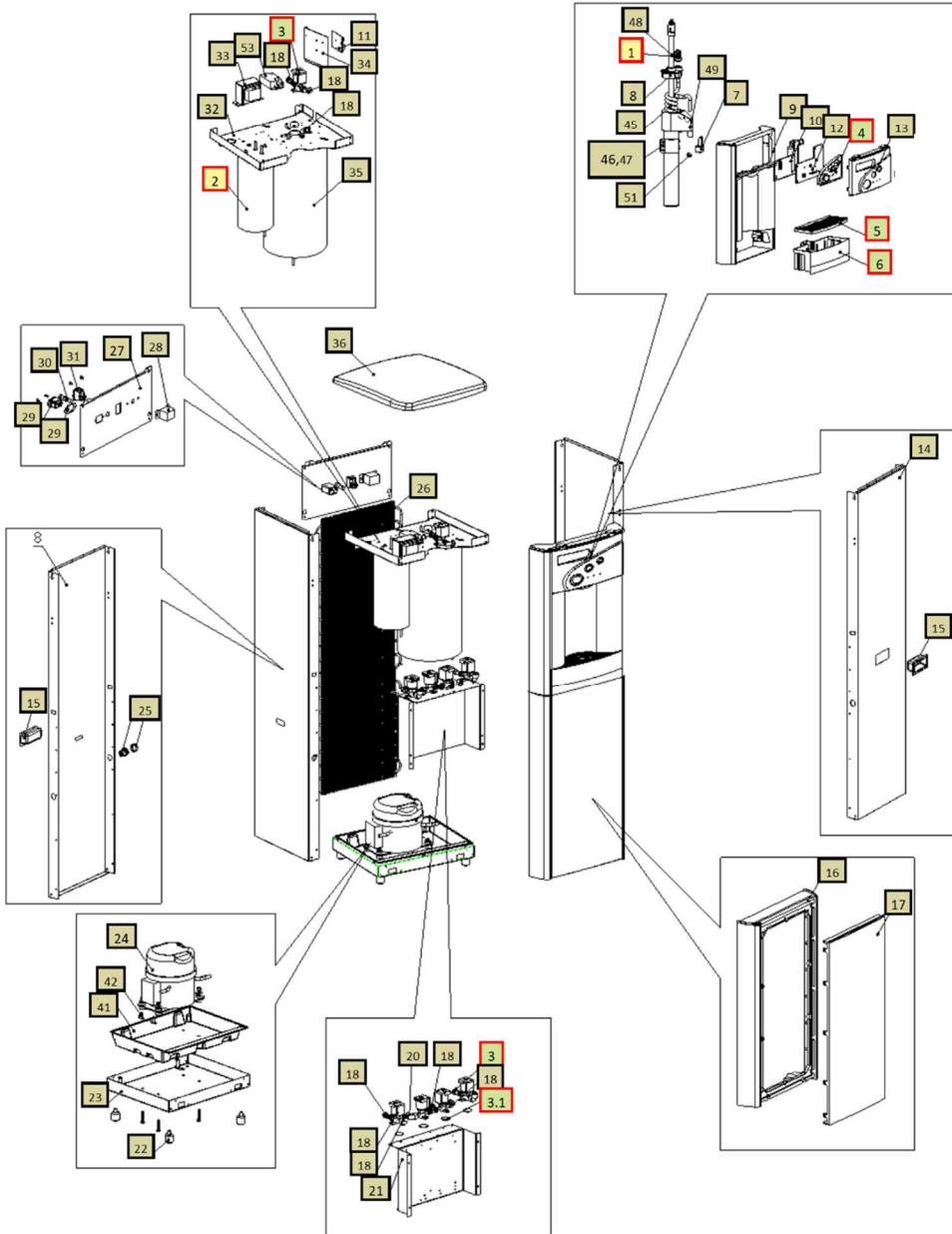
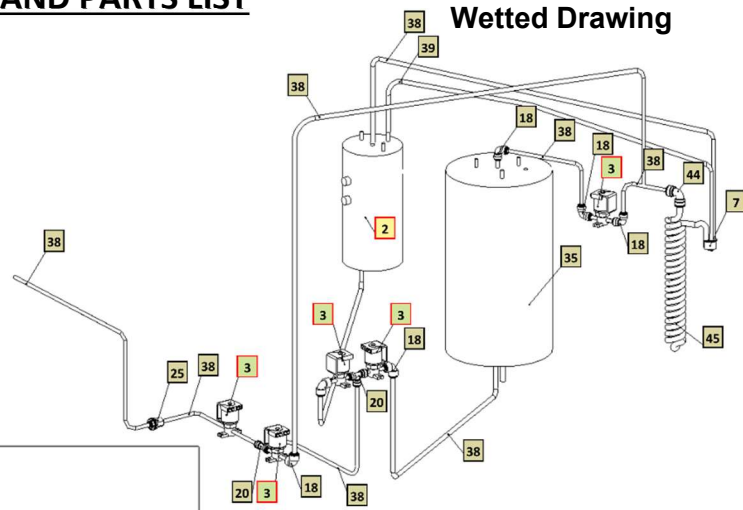


ECOSTREAM ELITE TOWER DRAWING AND PARTS LIST

Yellow = Consumables

Green = Recommended spare parts

Wetted Drawing



No	WLCP Part No.	Description	Part No	Cold Only	Hot & Cold	Stocked?	
Consumables							
1	12-8310	15W LTFW XTM UV Lamp - 80	CT-2085-IA0-00	X	X	Yes	
2	10-4029	Hot Tank (Pipe) 120V/500W – UVF2 1.5L	HT-3024		X	Yes	
Recommended Spare Parts							
2.1	12-1360	Overload with Manual Reset - 105°C (221°F) <i>Recommend stocking 2 each per every 10 units purchased</i>	HT-3012		X	Yes	
2.2	10-3030	Hot Water Temp Sensor	HT-3002			Yes	
3		MS DC Solenoid Valve SWV24-01	PU-0017-L00-00	X	X	Yes	
3.1	CU-0001	Solenoid Cushion <i>Recommend stocking 2 each per every 10 units purchased</i>	CU-0001	X	X	Yes	
4	12-5220	Silicon Button Key Mat AFL HCA – Culligan Type	PL-1206-A		X	Yes	
5	12-5230	Drip Tray Grill <i>Recommend stocking 4 each per every 10 units ordered</i>	PL-1152-A	X	X	Yes	
6		Canteen WL2200FX Drip Tray Body WL Logo	PL-0274-L00-SI	X	X	Yes	

Not Shown	01-2076	ScaleKleen <i>Recommend stocking 5 each per every 10 units ordered</i>	NA	X	X	Yes	
Remaining Parts							
7	12-8370	WL2000 Firewall Hot Water Faucet	PL-1351		X	Yes	
8	12-8320	WL200 Firewall UV Lamp Fixing Rubber	CT-2088			Yes	
9.1		Front Panel for Drip Tray Insert <i>when purchasing, also request Hot Water Caution Label LP-7169 / 12-0001 to adhere to front of this panel.</i>	PL-1146-A	X	X	Yes	
9.2	12-0001	Hot Water Caution Label Adhere to Front Panel for Drip Tray Insert	LP-7169		X	Yes	
10	12-5285	AFL PCB Cover	PL-1303	X	X	Yes	
11	12-5315	WL2200 Main PCB HCA w/ Leak Detection	EN-6102-A		X	Yes	
12		WL2000 Display PCB (Canteen)	EN-0109-L00-00	X		Yes	
13		Canteen WL2200FX Front Upper Inset Panel	PL-0273-L00-SI	X	X	Yes	
14	12-5200	WL2000 FS Silver Side Panel with Hole for Handle	ST-8249	X	X	Yes	
15	19-1030	Side Panel Plastic Handle	PL-1123	X	X	Yes	

16		Front Lower Silver Panel	PL-1148	X	X	Yes	
17		Front Lower Insert Panel-Silver	PL-1188-A	X	X	Yes	
18	Purchase from John Guest	JG Equal Elbow Connector 1/4" (PI0308S)	PU-4008	X	X	No	
19	Purchase from John Guest	JG Reducing Elbow Connector 5/16" * 1/4" (PI211008S)	PU-4007	X	X	No	
20	Purchase from John Guest	JG Equal Tee Connector 1/4" (PI0208S)	PU-4011	X	X	No	
21	12-8003	Filter Bracket	ST-8138	X	X	Yes	
22		Unit Control Rubber Feet	ST-8167-CN	X	X	Yes	
23	12-8004	WL2000 Down Base	ST-8137	X	X	Yes	
24.1	CO-0020-L00-00	LG Compressor 120V R134A CSB035LJCM	CO-0020-L00-00	X	X	Yes	
24.2		Compressor Capacitor	CO-0019-L00-00	X	X	Yes	
24.3		Capacitor Bracket	ST-0216-L00-00	X	X	Yes	
24.4		PTC Relay	CO-0017-L00-00	X	X	Yes	

24.5		Overload Protector	CO-0018-L00-00	X	X	Yes	
29.6	12-1001	Filter Dryer	CO-9008	X	X	Yes	
25	10-3067	Bulkhead Union ¼" x ¼" John Guest P/N PI1208S	PU-4028	X	X	Yes	
26	12-8102	Wire Condenser	CO-9027	X	X	Special Order	
27	12-8002	Back Panel Silver	ST-8135	X	X	No	
28		Cold Tank Thermostat	CT-2070-A	X	X	Yes	
28.1	LP-0326	Cold Thermostat Cover Label	PL-0326-L00-00	X	X	Yes	
29	EL-0061-L00-00	Socket for Plug Connection V0 Class	EL-0061-L00-00	X	X	Yes	
30	10-3014	Fuse Holder and Fuse 120V / 15A with One Wire	EL-5053	X	X	Yes	
30.1	10-3013	Fuse 120V / 15A	EL-5010	X	X	Yes	
31	12-5600	Power Switch (Red) – No Backlights	EL-5019-A	X	X	Yes	
32		Upper Shelf	ST-8136-R2	X	X	Yes	
33		Power Transformer 120V	EL-5147	X	X	Yes	

34		Main PCB Bracket	ST-8165-CN	X	X	Yes	
34.1	10-3017	PCB Stand-off Pin	EN-6059	X	X	Yes	
35	CT-2017-A	Cold Tank 4 Liter Assembly	CT-2017-A	X	X	No	
36	12-5260	Top Cover – Silver	PL-1199-C	X	X	Yes	
37	10-3062	JG LLDPE Tube - Blue 8mm John Guest P/N PE-0806-100M-B	PU-4014	X	X	Yes	
38	19-1054	JG LLD PE Tube - Blue O.D.1/4" John Guest P/N PE-08-BI-1000F-B	PU-4031	X	X	Purchase from John Guest	
39		Silicon Tube 5/16" for Hot Water	PL-4064-L00-00		X	Yes	
Not Shown	10-3007	Power Cord 120V – 1840 mm	EL-5001-B	X	X	Yes	
40	Purchase from John Guest	JG 1/4" Plug PI0808S (used with Bulkhead Union 1/4" x 1/4" John Guest P/N PI1208S)	PL-1172	x	x	Yes	
41	12-3155	Chiller 3 Freestanding Leak Tray	PL-1294-A	x	x	Yes	
42		WL3000 Leak Containment tray Clip	ST-8207-CN	x	x	Yes	
43		Leak Sensor Wire	EL-5076-KR	x	x	Yes	
44	Purchase from John Guest	JG 3/8"x1/4" Reducing Fitting (PI211208S)	PU-4137	x	x	Yes	

45	12-8305	Faucet UV – Spiral Quartz	FU-0007	x	x	Yes	
46	12-8380	UVC Sensor Fixing Metal Bracket Front (with Tube)	FU-0010	x	x	Yes	
47	12-8385	UVC Sensor Fixing Metal Bracket Back	FU-0011	X	x	Yes	
48		Sensor Fixing Rubber	PL-1358	X	X	Yes	
49		WL2 Firewall Mark IV AL Assy from India	FW-0027-100-00	x	X	Yes	
50	FW-0020-L00	Firewall Buffer	FW-0020-L00	x	x	Yes	
51	12-8300	UVC Sensor Wire	AK-0063	x	x	Yes	
52		JG Straight Connector 1/4"	PU-4010	X	X	Yes	
53		13W/15W 120V/60Hz Electronic FX Ballast	EN-0008-LA1-00	X	X	Yes	