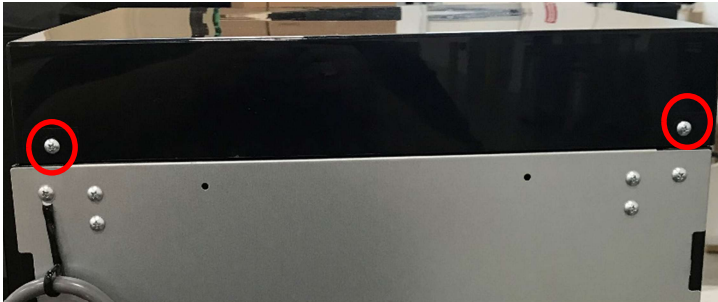


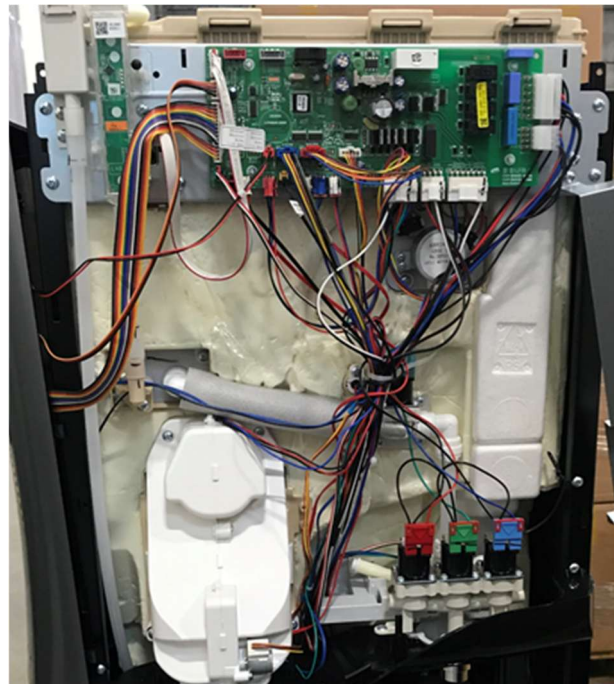
## **ADVANCED OPERATIONS: ICE AUGER MOTOR COUPLER REPLACEMENT**

In the event of an ice dispense failure, the Ice Auger Motor Coupler may need to be accessed for repair or replacement. The steps below outline how to access this component.

1. First, shut water off to the machine and drain the ambient and cold tank using the Cold Drain in the lower compartment of the machine, which is explained earlier in this manual. No need to drain the Hot Tank. Once water has been drained from the cold and ambient tanks, unplug the machine from its power source. Remove the Ambient Tank Cover and remove the Ambient Tank and the plastic support underneath it to access the Ice Making Bin.
2. Remove the top cover and upper front panel. Remove the two screws at the rear and slide the cover back and off the unit. Then, remove the two screws holding the upper front panel in place, lift and pull away from the unit, and set aside.



3. With the front upper panel removed, locate the PCB shield and remove the two screws holding it in position, lift and pull away, and set aside. The front upper compartment of the machine should now be accessible as shown.



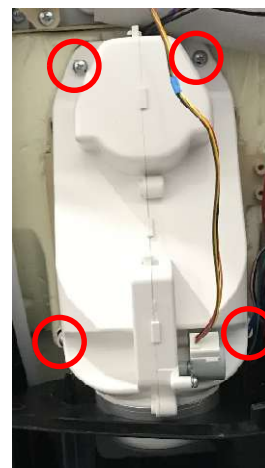
- On the main PCB, front and center, locate and disconnect (again, the machine should be disconnected from power) the connections shown below. The larger white connector on the right runs to the Ice Auger Motor and the smaller white connection runs to the Ice Door Motor. If bundled, untangle these cables from the rest.



ICE DOOR  
MOTOR

ICE AUGER  
MOTOR

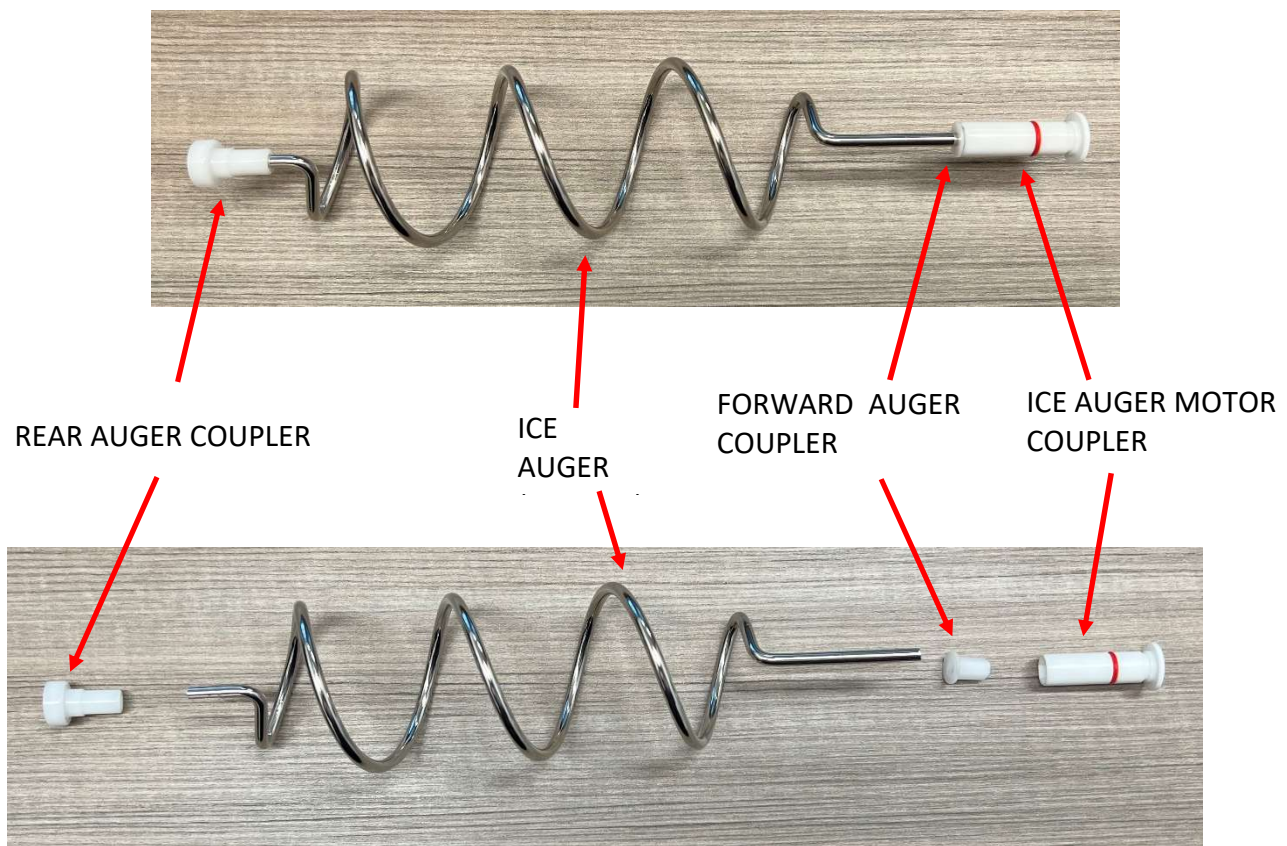
- Proceed to remove the Ice Chute Housing. First, locate and remove the decorative ring from the mouth of the Chute by giving it about a quarter-turn and pulling down. Once removed, remove the 4 screws around the perimeter of the Ice Chute Housing. The housing should pull away from the machine with a bit of maneuvering. Set aside. **\*\*\*CAUTION: REMOVING THE ICE CHUTE WILL ALSO REMOVE THE ICE DOOR WITH IT. THIS MEANS THAT THE OPENING TO THE ICE BIN WILL BE COMPLETELY OPEN AND SOME ICE MAY COME FALLING OUT WITH REMOVAL. IT IS RECOMMEND TO EITHER PULL SOME OF THE ICE AWAY FROM CHUTE BEFORE THIS STEP OR HAVE A WAY TO BLOCK THE ICE WHEN THE CHUTE IS REMOVED.**



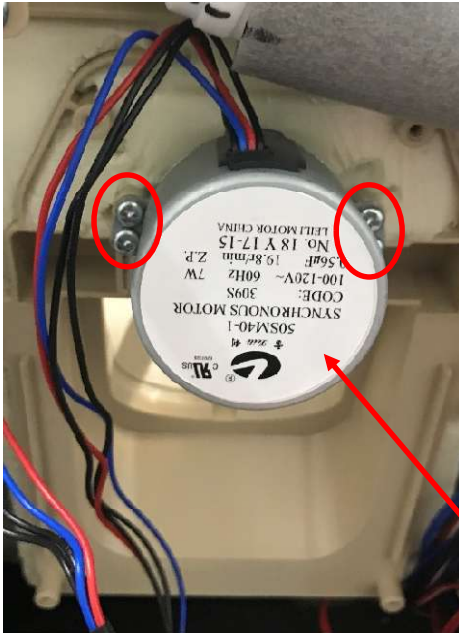
**\*\*\*READ THIS\*\*\***

Before continuing, it is fundamental to understand how the Ice Auger is constructed and how it interfaces with the Auger Motor. At the back of the Ice Bin is a molded-in pivot point. The Rear Auger Coupler sits in this pivot point. The Ice Auger is inserted into the Rear Auger Coupler. Then the Front Auger Coupler is inserted onto the forward tip of the Ice Auger and interfaces with the Ice Auger Motor Coupler, which bridges the gap from the outside of the Ice Bin to the inside. The Ice Auger Motor is then inserted into the Ice Auger Motor Coupler and fastened into place with screws.

It is important to know this because the Rear Auger Coupler and the Ice Auger Motor Coupler are the only two fixed points in this assembly and allow the Auger to freely spin. Removing the Ice Auger Motor Coupler will give these parts the freedom to move or fall out of alignment. Once the Auger Motor Coupler is removed (especially if done quickly) there is the possibility that the Forward Auger Coupler may come off of the Ice Auger and fall into the ice, followed by the Ice Auger itself falling loose, and then the Rear Auger Coupler. If this happens, install all parts in the order mentioned above starting at the rear of the Ice Bin and working towards the front, until the Motor Coupler is in place. Once the Motor Coupler is in place, the entire assembly will be held in place until the Motor can be returned to position with screws installed.



6. With the Ice Chute removed, locate the 4 screws holding the Ice Auger Motor in place, and pull out to remove. Once removed, the Ice Auger Motor Coupler can be seen. Removing this coupler may cause the Ice Auger and other couplers to fall apart from each other or out of alignment. Proceed with caution to prevent this. Simply pull the Ice Auger Motor Coupler out of its hole to remove. If the Auger comes out of alignment and the forward or rear coupler come up missing, carefully look in the ice pile for them. Their size and color help them blend in well.



ICE AUGER  
MOTOR

ICE AUGER  
MOTOR COUPLER

7. To replace the Motor Coupler, insert into the hole and, from the inside of the Ice Bin, manipulation of the Auger and couplers may be required to ensure proper alignment and a secure interface. Reassemble in reverse order and remember to reattach the electrical connections to the PCB for the Auger Motor and the Ice Door Motor.