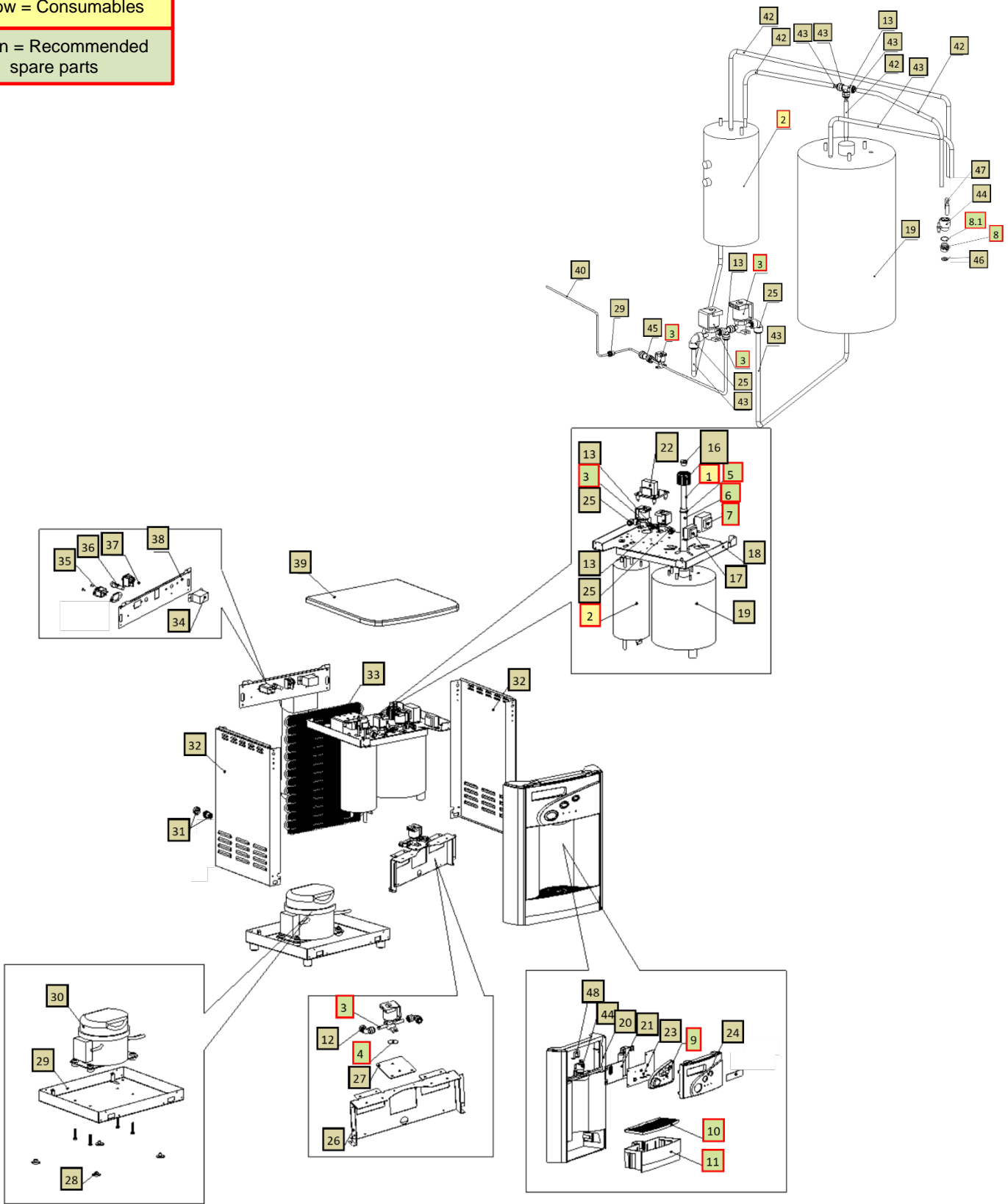


ECOSTREAM COUNTER TOP DRAWING AND PARTS LIST

Wetted Drawing

- Yellow = Consumables
- Green = Recommended spare parts







No	WLCP Part No.	Description	Part No	Stocked?	
Consumables					
1	12-2350	4W Lamp Assembly with Glow Starter	CT-2030-I00-00	Yes	
2	12-5615	Hot Tank 1.6 Liter (.42 Gallons) 87°C (189°F) – Counter Top	HT-3041	Yes	
Recommended Spare Parts					
2.1		Overload with Manual Reset - 97°C (206°F) <i>Recommend stocking 2 each per every 10 units purchased</i>	EL-0159-L00-00	Yes	
3		MS DC Solenoid Valve SWV240-01	PU-0017-L00-00	Yes	
4		Solenoid Cushion <i>Recommend stocking 2 each per every 10 units purchased</i>	CU-0001	Yes	
5	10-2500	Black O-Ring for Quartz Sleeve <i>Recommend stocking 1 each per every 10 units purchased</i>	CT-2006	Yes	
6	14-1051	Quartz Sleeve for 4W Lamp <i>Recommend stocking 1 each per every 10 units purchased</i>	CT-2026	Yes	
7		UV Lamp Ballast 120V 60Hz 4W	EN-0068-L00-00	Yes	
8		Faucet Nipple – Blue with Screen <i>Recommend stocking 2 each per every 10 units purchased</i>	PL-1013	Yes	
8.1	10-2600	Natural Faucet O-Ring – Silicon White <i>Recommend stocking 2 each per every 10 units purchased</i>	CT-2007	Yes	

9	12-5660	Silicon Button Key Mat AFL HC Culligan	PL-1352	Yes	
10	12-5230	WL2200 Silver Drip Tray Grill Culligan	PL-1152-A	Yes	
11		Canteen WL2100 Drip Tray Body – WL & BIO Logo	PL-0268-L00-00	Yes	
Not Shown	01-2076	ScaleKleen <i>Recommend stocking 2 each per every 10 units purchased</i>	NA	Yes	
Remaining Parts					
12	Purchase from John Guest	JG Reducing Elbow Connector 5/16" * 1/4" (PI211008S)	PU-4007	No	
13	Purchase from John Guest	JG Equal Tee Connector 1/4" (P10208S)	PU-4011	No	
14	10-3017	PCB Stand-off Pin	EN-6059	Yes	
16	12-1210	UV Lamp Retaining Threaded Nut	PL-1128	Yes	
17	12-3117	Power Transformer 120V	EL-5003-A	Yes	
18	12-3165	Upper Shelf	ST-0276-L00-00	Yes	
19	12-3110	2L UV Cold Tank Assembly	CT-2060	Yes	

20	12-5650	Front Upper Drip Tray Insert Panel – <i>when purchasing, also request Hot Water Caution Label LP-7169 / 12-0001 to adhere to front of this panel.</i>	PL-1201-B	Yes	
20.1	12-0001	Hot Water Caution Label – <i>adhere to Front Upper Drip Tray Insert Panel.</i>	LP-7169	Yes	
21	12-5285	AFL PCB Cover	PL-1303	Yes	
22		Canteen Main PCB	EN-0108-L00-00	Yes	
23		Canteen WL2100 Display PCB	EN-0107-L00-00	Yes	
24		Canteen WL 2100 HC Front Hatch Panel	PL-0271-L00-00	Yes	
25	Purchase from John Guest	JG Equal Elbow Connector 1/4" (PI0308S)	PU-4008	No	
26	12-3175	WL2100 Mini Filter Bracket	ST-8152-B	Yes	
27		WL2000 Mini Firewall Solenoid Valve Fixing Bracket	ST-0277	Yes	
28	12-3150	Unit Rubber Feet	PL-1251-CN	Yes	
29	12-3170	WL2100 Mini Bottom Tray (Down Panel)	ST-8151-A	Yes	

30		Danfu PTC Compressor (R134a 1/8HP) 110V/60Hz PW2.5DV	CO-9045	Yes	
30.1	12-8104	Compressor Starter Relay	CO-0034-L00-00	Yes	
30.2		Compressor Overload	CO-0027-L00-00	Yes	
30.3	12-1001	Filter Dryer	CO-9008	Yes	
31	10-3067	Bulkhead Union ¼" x ¼" John Guest P/N PI1208S	PU-4028	Yes	
32	12-5675	Side Panel	ST-8148-A	Yes	
33	12-3100	Wire Condenser	CO-9031	Special Order	
34	19-1069	Cold Tank Thermostat	CT-2070-A	Yes	
34.1	LP-0326	Cold Thermostat Cover Label	LP-0326-L00-00	Yes	
35		Socket for Plug Connection V0 Class	EL-0061-L00-00	Yes	
36		Fuse Holder and Fuse 120V / 15A with One Wire	EL-5053	Yes	
36.1	10-3013	Fuse 120V / 15A	EL-5010	Yes	

37	12-5600	Power Switch (Red)	EL-5019-A	Yes	
38	12-5674	Silver Back Panel	ST-8253	Yes	
39	12-5655	BOA Top Cover Gray (WL2200)	PL-1249-E	Yes	
40	Purchase from John Guest 19-1054	JG LLD PE Tube - Blue O.D.1/4"John Guest P/N PE-08-BI-1000F-B	PU-4031	No	
41	Purchase from John Guest	JG 1/4" Stopper PI0808S (used with Bulkhead Union 1/4" x 1/4" John Guest P/N PI1208S)	PL-1172	No	
42	10-7040	Silicon Tube 5/16" for Hot Water	PU-4064	Yes	
43	10-3062	JG LLDPE Tube - Blue 8mm John Guest P/N PE-0806-100M-B	PU-4014	Yes	
44		Faucet HC & CA	PL-1011	Yes	
Not Shown	10-3007	Power Cord 120V – 1840 mm	EL-5001-B	Yes	
45	19-1053	JG Equal Straight Connector 1/4"	PU-4010	Yes	
46		Stainless Steel Gauze for Faucet	PL-1013-G	Yes	

47	10-2701	Stainless Steel Insert For Faucet	PL-1088	Yes	
48		Faucet Metal Clip for WL2200	ST-8282	Yes	
49		Hot Tank Thermostat – 85C (185F)	EL-0035-L00-00	Yes	
50		Thermostat and Overload Metal Cover	ST-8290	Yes	
51		WL2100 Mini high voltage cover	ST-8301	Yes	