

FAULT CODE TROUBLESHOOTING INDEX

Note About Energy Saver: In order to qualify for Energy Star, this unit comes with the energy saver defaulted to ON. If no buttons are pressed on the front panel for 3 hours, the Ecostream will enter sleep mode, and power to the heater will be shut down. **The cold water (compressor) will remain active/on 24/7.**

To exit sleep mode, one of the front panel buttons (Cold Dispense, Hot Select or Room Select) must be pushed. To disable Energy Saver Mode, see Page 52.



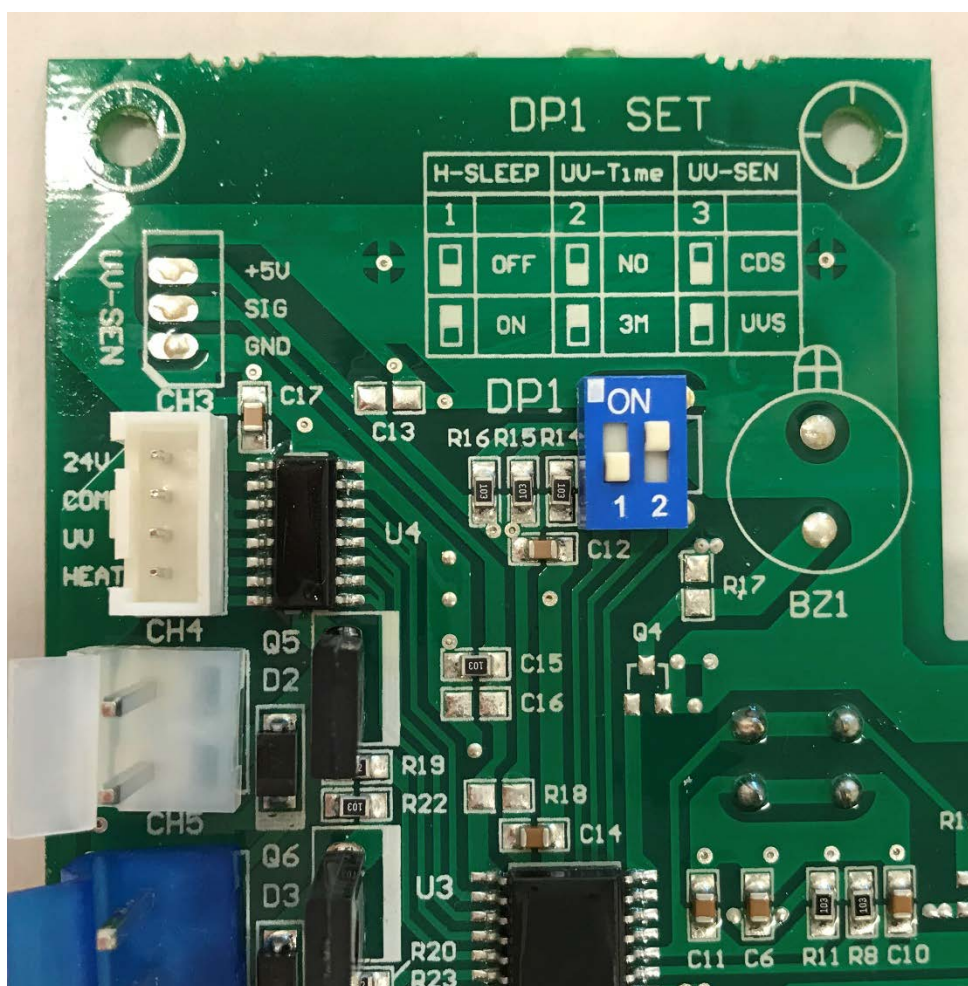
c. LED Indication and configuration:

LED No	Color	Remarks
① LED 1	Green	<ul style="list-style-type: none"> Power Always lit (ON)
② LED 2	Green	<ul style="list-style-type: none"> Energy Saver Green ON-When machine is normal working and not in Sleep mode (Not in Energy saver), and Hot water and control is normal. Green OFF-When machine is in Sleep mode (Energy saver mode) and hot water is not ready because heater is OFF. There is no indication for Heater ON/OFF status. Sleep mode ON/OFF can be selected by Dip switch on the PCB.
③ LED 3	Red	<ul style="list-style-type: none"> Leak Detection Normal (No leak detection), LED is OFF Blinks Red with alarm when leak is detected

To Disable the Energy Saver Mode:

NOTE: THIS CHANGE MUST BE MADE WITH THE POWER OFF OR THE POWER MUST BE CYCLED AFTER THE SETTING CHANGE. IF NOT DONE, THE CHANGE WILL NOT BE RECOGNIZED.

Note the DIP switches on the front display pcb (the one mounted to the back side of the front upper panel):



To disable the energy saver, DIP #1 must be switched from ON to OFF.