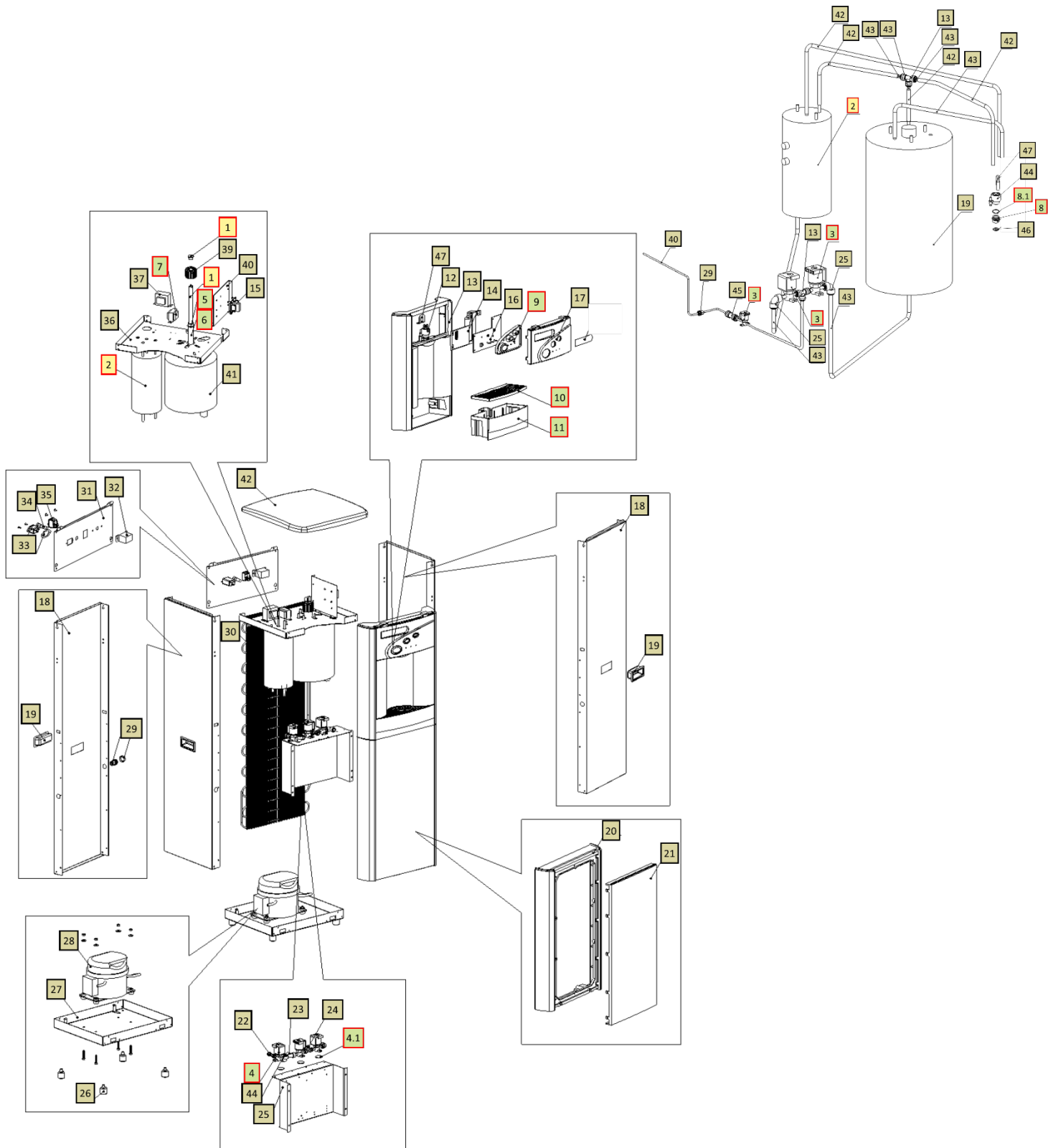



ECOSTREAM TOWER DRAWING AND PARTS LIST

Wetted Drawing





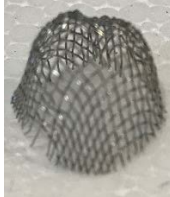

No	WLCP Part No.	Description	Part No	Cold Only	Hot & Cold	Stocked?	
Consumables							
1	10-2350	8W UV Lamp Assembly with Glow starter	CT-2001-L00-00	X	X	Yes	
2	12-5615	Hot Tank (Pipe) 120V/500W – UVF2 1.5L	HT-3041		X	Yes	
Recommended Spare Parts							
2.1	12-1360	Overload with Manual Reset - 97°C (206°F) <i>Recommend stocking 2 each per every 10 units purchased</i>	HT-3012		X	Yes	
3		Hot Tank Thermostat – 85C (185F)	EL-0035-L00-00		x	Yes	
4		MS DC Solenoid Valve SWV24-01	PU-0017-L00-00	X	X	Yes	
4.1		Solenoid Cushion <i>Recommend stocking 2 each per every 10 units purchased</i>	CU-0001	X	X	Yes	
5	10-2500	Black O-Ring for Quartz Sleeve <i>Recommend stocking 1 each per every 10 units ordered</i>	CT-2006	X	X	Yes	
6	10-1400	Quartz Sleeve for 8W Lamp <i>Recommend stocking 1 each per every 10 units ordered</i>	CT-2002	X	X	Yes	
7	10-3010	UV Lamp Ballast 120V 60Hz 8W	EL-0068-L00-00	X	X	Yes	
8	10-3048	Blue Faucet Nipple, with Stainless Steel Gauze <i>Recommend stocking 2 each per every 10 units ordered</i>	PL-1013	X	X	Yes	

8.1	10-2600	White Silicon Faucet O-Ring <i>Recommend stocking 2 each per every 10 units ordered</i>	CT-2007	X	X	Yes	
9	12-5660	WL2100 Silicon Button Key Mat AFL HC	PL-1352		X	Yes	
10	12-5230	Drip Tray Grill <i>Recommend stocking 4 each per every 10 units ordered</i>	PL-1152-A	X	X	Yes	
11		WL2100 Canteen Drip Tray - unpainted	PL-0268-L00-00	X	X	Yes	
Not Shown	01-2076	ScaleKleen <i>Recommend stocking 5 each per every 10 units ordered</i>	NA	X	X	Yes	
Remaining Parts							
12		Faucet HC & CA	PL-1011		X	Yes	
13	12-5650	Front Panel for Drip Tray Insert WL2100	PL-1201-B	X	X	Yes	
13.1	12-0001	Hot Water Caution Label Adhere to Front Panel for Drip Tray Insert	LP-7169		X	Yes	
14	12-5285	AFL PCB Cover	PL-1303	X	X	Yes	

15		WL2100 Main PCB HC w/ Leak Detection	EN-0108- L00-00		X	Yes		
16		WL2100 Display PCB (Canteen)	EN-0107- L00-00		X	Yes		
17		WL2100 Front Hatch Panel - Unpainted	PL-0271- L00-00		X	X	Yes	
18	20-0010	WL2000 FS Silver Side Panel with Hole for Handle	ST-8249-A		X	X	Yes	
19	19-1030 or 12-8058	Side Panel Plastic Handle	PL-1123		X	X	Yes	
20		Front Lower Insert Panel	PL-0272- L00-00		X	X	Yes	
21	12-5635	Front Down Panel – Gray	PL-1187-A		X	X	Yes	
22	Purchase from John Guest	JG Equal Elbow Connector ¼” (PI0308S)	PU-4008		X	X	No	
23	Purchase from John Guest	JG Reducing Elbow Connector 5/16” * ¼” (PI211008S)	PU-4007		X	X	No	
24	Purchase from John Guest	JG Equal Tee Connector ¼” (P10208S)	PU-4011		X	X	No	
25		WL2000 FS Filter Bracket - Unpainted	ST-0275- L00-00		X	X	Yes	

26	ST-8167-CN	Unit Control Rubber Feet	ST-8167-CN	X	X	Yes	
27	12-8004	WL2100 Down Base Unpainted	ST-8137-A	X	X	Yes	
28		Danfu PTC Compressor (70W) 110V/60Hz PW2.5DV	CO-9045	X	X	Yes	
28.1	12-1001	Domestic Filter Dryer	CO-9008	X	X	Yes	
28.2	12-8104	Compressor Starter Relay	CO-0034-L00-00	X	X	Yes	
28.3		Overload Protector – Danfu – DRB27N61A1	CO-0027-L00-00	X	X	Yes	
29	10-3067	Bulkhead Union 1/4" x 1/4" John Guest P/N PI1208S	PU-4028	X	X	Yes	
30	12-8102	Wire Condenser	CO-9027	X	X	Special Order	
31	12-5673	WL2100 Gray Back Panel	ST-8135-A	X	X	No	
32	19-1069	Cold Tank Thermostat	CT-2070-A	X	X	Yes	
32.1		Cold Thermostat Cover Label	PL-0326-L00-00	X	X	Yes	
33		Socket for Plug Connection V0 Class	EL-0061-L00-00	X	X	Yes	

34	EL-5053	Fuse Holder and Fuse 120V / 15A with One Wire	EL-5053	X	X	Yes	
34.1	10-3013	Fuse 120V / 15A	EL-5010	X	X	Yes	
35	12-5600	Power Switch (Red) – No Backlights	EL-5019-A	X	X	Yes	
36		WL2000 FS Upper Front Shelf - Unpainted	ST-0274-L00-00	X	X	Yes	
37	12-3117 or 10-1700	Power Transformer 120V	EL-5003-A	X	X	Yes	
39	12-1210	UV Lamp Retaining Threaded Nut	PL-1128	X	X	Yes	
40		Canteen WL2100 Main PCB Bracket - unpainted	ST-0278-L00-00	X	X	Yes	
40.1	10-3017	PCB Stand-off Pin	EN-6059	X	X	Yes	
41	12-3110	Cold Tank 2 Liter Assembly with UV Holder	CT-2060	X	X	No	
42	12-5640	WL2100 Top Cover – Gray	PL-1199-D	X	X	Yes	
43	10-3062	JG LLDPE Tube - Blue 8mm John Guest P/N PE-0806-100M-B	PU-4014	X	X	Yes	
44	19-1054	JG LLD PE Tube - Blue O.D.1/4" John Guest P/N PE-08-BI-1000F-B	PU-4031	X	X	Purchase from John Guest	
45	10-7040	Silicon Tube 5/16" for Hot Water	PL-4064-L00-00		X	Yes	
Not Shown	10-3007	Power Cord 120V – 1840 mm	EL-5001-B	X	X	Yes	

46		JG 1/4" Plug (PI0808S)	PL-1172	x	x	Yes	
47		Faucet Metal Clip for WL2200	ST-8282	x	x	Yes	
48		Stainless Steel Gauze for Faucet	PL-1013-G	x	x	Yes	
49	10-2701	Stainless Steel Insert for Faucet WL850	PL-1088	x	x	Yes	
50		Thermostat and Overload Metal Cover	ST-8290	x	x	Yes	