

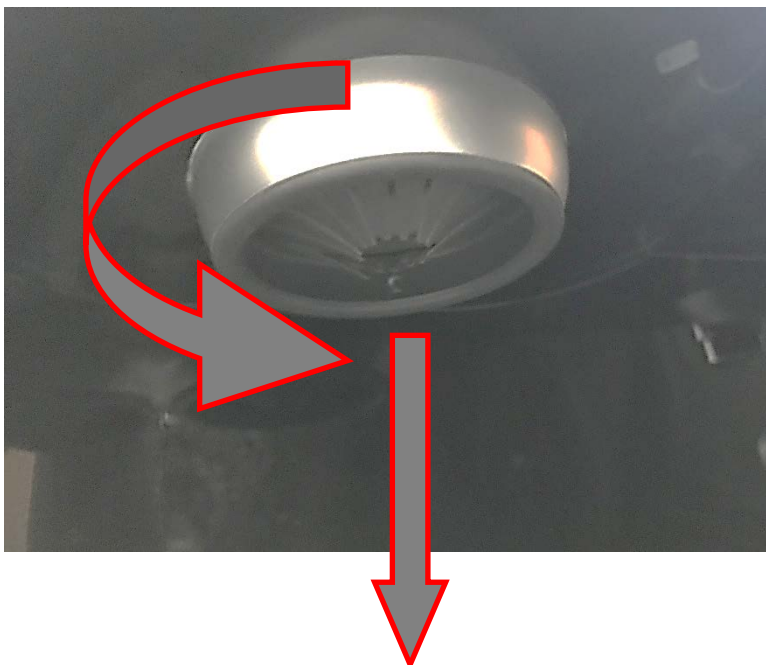
ADVANCED OPERATIONS: ACCESS THE ICE DISPENSE CHUTE

In the event of an ice dispense failure, the Ice Dispense Chute and other components may need to be accessed for repair or replacement. The steps below outline how to access the dispense chute and surrounding components.

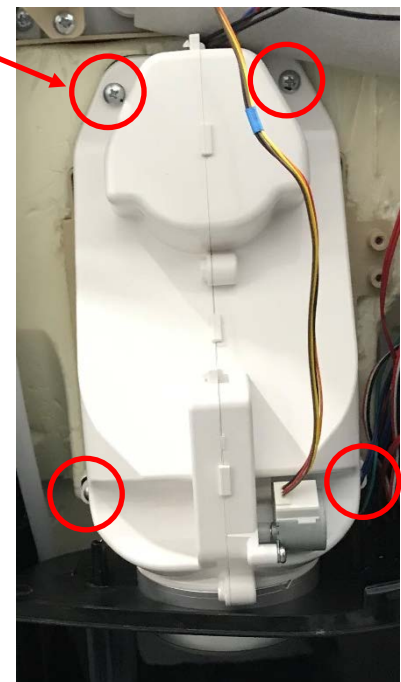
1. To access the dispense chute, first remove the top cover and upper front panel. Remove the two screws at the rear and sliding the cover back and off the unit. Then, remove the two screws holding the upper front panel in place, lift and pull away from the unit, and set aside.



2. With the front upper panel removed, locate the white plastic ice chute. Locate the silver dispensing ring mounted to the bottom of the chute, protruding into the dispensing area. Twist this ring 1/4 turn counterclockwise and pull down to remove. Notice the four screws around the perimeter of the ice chute. Remove these screws. Trace the Ice Door Motor wire up to the PCB and remove if necessary.

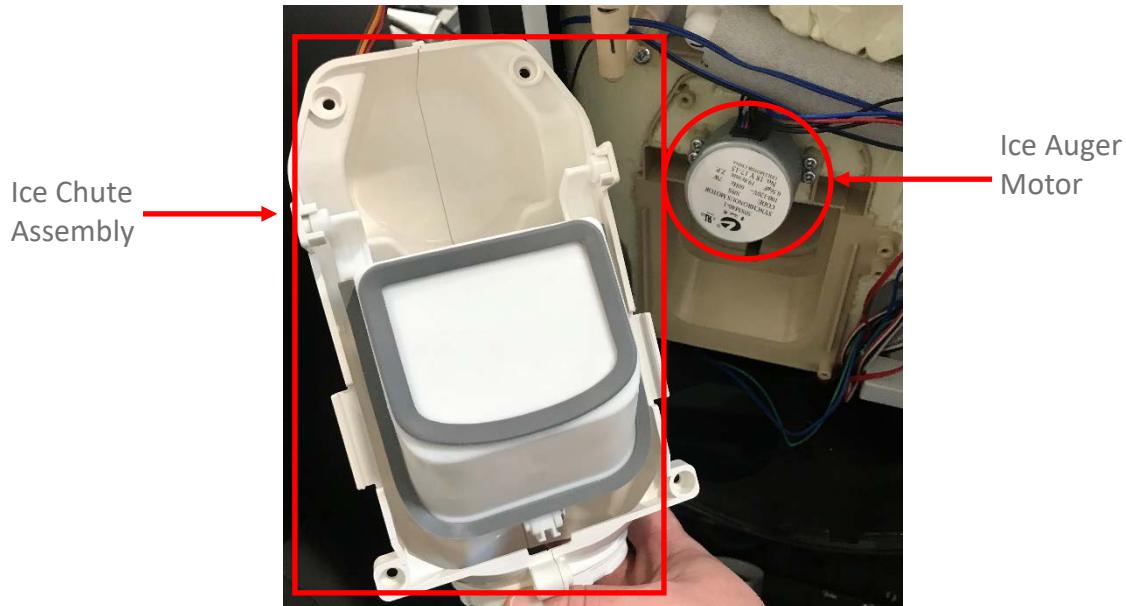


Remove



3. Once the screws have been removed, the ice chute should be able to come free from the body of the tank system. Once free, the inner components of the chute, the chute itself, and the auger motor can be accessed.

NOTE: If Ice is present in the unit, removing the ice chute will allow some to fall out.



4. To further disassemble and open the clam-shell structure of the Ice Chute Assembly, remove the three screws along the spine of the clamshell. Once removed, pop the tension tabs along the spine. With all screws out and the tabs unclipped, the two halves should come apart.

NOTE: The components inside the clamshell are captured in place and will become loose and possibly fall out once the clamshell is opened.